

12-9488: Anti-IGF-1R antibody(DMC721); IgG1 Chimeric mAb

Clonality :	Monoclonal
Clone Name :	DMC721
Application :	FACS
Reactivity :	Human
Uniprot ID :	P08069
Alternative Name :	CD221; IGFIR; IGFR; JTK13
Isotype :	Rabbit/Human Fc chimeric IgG1

Description

Description :Anti-IGF-1R antibody(DMC721); IgG1 Chimeric mAb

This receptor binds insulin-like growth factor with a high affinity. It has tyrosine kinase activity. The insulin-like growth factor I receptor plays a critical role in transformation events. Cleavage of the precursor generates alpha and beta subunits. It is highly overexpressed in most malignant tissues where it functions as an anti-apoptotic agent by enhancing cell survival. Alternatively spliced transcript variants encoding distinct isoforms have been found for this gene. [provided by RefSeq, May 2014]

Product Info

Amount :	10 µg / 100 µg
Purification :	Purified from cell culture supernatant by affinity chromatography
Content :	Lyophilized from sterile PBS, pH 7.4. Normally 5 % - 8% trehalose is added as protectants before lyophilization. Please see Certificate of Analysis for specific instructions of reconstitution.
Storage condition :	Store at -20°C to -80°C for 12 months in lyophilized form. After reconstitution, if not intended for use within a month, aliquot and store at -80°C (Avoid repeated freezing and thawing). Lyophilized proteins are shipped at ambient temperature.

Application Note

FACS 1/100

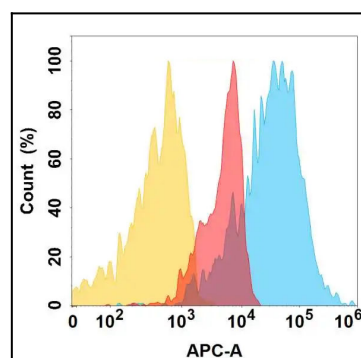


Figure 1. IGF-1R protein is highly expressed on the surface of Expi293 cell membrane. Flow cytometry analysis with Anti-IGF-1R (DMC721) mAb on Expi293 cells transfected with human IGF-1R (Blue histogram) or Expi293 transfected with irrelevant protein (Red histogram), and Isotype antibody on Expi293 transfected with irrelevant protein (Orange histogram).