

12-9484: Anti-ALPP antibody(DMC686); IgG1 Chimeric mAb

Clonality :	Monoclonal
Clone Name :	DMC686
Application :	FACS
Reactivity :	Human
Uniprot ID :	P05187
Alternative Name :	ALP; ALPI; IAP; PALP; PLAP; PLAP-1
Isotype :	Rabbit/Human Fc chimeric IgG1

Description

Description :Anti-ALPP antibody(DMC686); IgG1 Chimeric mAb

The protein encoded by this gene is an alkaline phosphatase; a metalloenzyme that catalyzes the hydrolysis of phosphoric acid monoesters. It belongs to a multigene family composed of four alkaline phosphatase isoenzymes. The enzyme functions as a homodimer and has a catalytic site containing one magnesium and two zinc ions; which are required for its enzymatic function. One of the main sources of this enzyme is the liver; and thus; it's one of several indicators of liver injury in different clinical conditions. In pregnant women; this protein is primarily expressed in placental and endometrial tissue; however; strong ectopic expression has been detected in ovarian adenocarcinoma; serous cystadenocarcinoma; and other ovarian cancer cells. [provided by RefSeq; Aug 2020]

Product Info

Amount :	10 µg / 100 µg
Purification :	Purified from cell culture supernatant by affinity chromatography
Content :	Lyophilized from sterile PBS, pH 7.4. Normally 5 % - 8% trehalose is added as protectants before lyophilization. Please see Certificate of Analysis for specific instructions of reconstitution.
Storage condition :	Store at -20°C to -80°C for 12 months in lyophilized form. After reconstitution, if not intended for use within a month, aliquot and store at -80°C (Avoid repeated freezing and thawing). Lyophilized proteins are shipped at ambient temperature.

Application Note

FACS 1:100

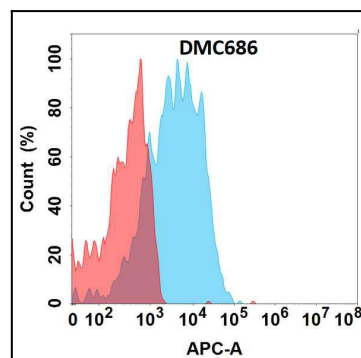


Figure 1. Flow cytometry analysis with Anti-ALPP(DMC686) on Expi293 cells transfected with human ALPP(Blue histogram) or Expi293 transfected with irrelevant protein (Red histogram).