

12-9480: Anti-CXCR2 antibody(DMC681); IgG1 Chimeric mAb

Clonality :	Monoclonal
Clone Name :	DMC681
Application :	FACS
Reactivity :	Human
Uniprot ID :	P25025; Q53PC4
Alternative Name :	CD182; CDw128b; CMKAR2; IL8R2; IL8RA; IL8RB
Isotype :	Rabbit/Human Fc chimeric IgG1

Description

Description :Anti-CXCR2 antibody(DMC681); IgG1 Chimeric mAb

The protein encoded by this gene is a member of the G-protein-coupled receptor family. This protein is a receptor for interleukin 8 (IL8). It binds to IL8 with high affinity; and transduces the signal through a G-protein activated second messenger system. This receptor also binds to chemokine (C-X-C motif) ligand 1 (CXCL1:MGSA); a protein with melanoma growth stimulating activity; and has been shown to be a major component required for serum-dependent melanoma cell growth. This receptor mediates neutrophil migration to sites of inflammation. The angiogenic effects of IL8 in intestinal microvascular endothelial cells are found to be mediated by this receptor. Knockout studies in mice suggested that this receptor controls the positioning of oligodendrocyte precursors in developing spinal cord by arresting their migration. This gene; IL8RA; a gene encoding another high affinity IL8 receptor; as well as IL8RBP; a pseudogene of IL8RB; form a gene cluster in a region mapped to chromosome 2q33-q36. Alternatively spliced variants; encoding the same protein; have been identified. [provided by RefSeq; Nov 2009]

Product Info

Amount :	10 µg / 100 µg
Purification :	Purified from cell culture supernatant by affinity chromatography
Content :	Lyophilized from sterile PBS, pH 7.4. Normally 5 % - 8% trehalose is added as protectants before lyophilization. Please see Certificate of Analysis for specific instructions of reconstitution.
Storage condition :	Store at -20°C to -80°C for 12 months in lyophilized form. After reconstitution, if not intended for use within a month, aliquot and store at -80°C (Avoid repeated freezing and thawing). Lyophilized proteins are shipped at ambient temperature.

Application Note

FACS 1:100

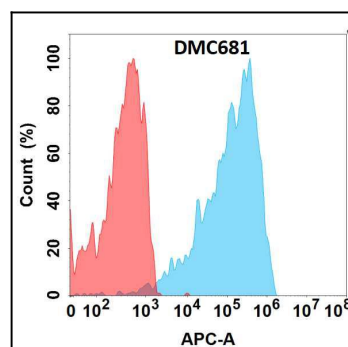


Figure 1. Flow cytometry analysis with Anti-CXCR2(DMC681) on Expi293 cells transfected with human CXCR2(Blue histogram) or Expi293 transfected with irrelevant protein (Red histogram).