

## 12-9470: Anti-LILRB2 antibody(DMC496); IgG1 Chimeric mAb

|                           |                               |
|---------------------------|-------------------------------|
| <b>Clonality :</b>        | Monoclonal                    |
| <b>Clone Name :</b>       | DMC496                        |
| <b>Application :</b>      | FACS                          |
| <b>Reactivity :</b>       | Human                         |
| <b>Uniprot ID :</b>       | Q8N423                        |
| <b>Alternative Name :</b> | LIR-2; ILT-4; MIR-10; CD85d   |
| <b>Isotype :</b>          | Rabbit/Human Fc chimeric IgG1 |

### Description

Description :Anti-LILRB2 antibody(DMC496); IgG1 Chimeric mAb

This gene is a member of the leukocyte immunoglobulin-like receptor (LIR) family; which is found in a gene cluster at chromosomal region 19q13.4. The encoded protein belongs to the subfamily B class of LIR receptors which contain two or four extracellular immunoglobulin domains; a transmembrane domain; and two to four cytoplasmic immunoreceptor tyrosine-based inhibitory motifs (ITIMs). The receptor is expressed on immune cells where it binds to MHC class I molecules on antigen-presenting cells and transduces a negative signal that inhibits stimulation of an immune response. It is thought to control inflammatory responses and cytotoxicity to help focus the immune response and limit autoreactivity. Multiple transcript variants encoding different isoforms have been found for this gene. [provided by RefSeq; Jul 2008]

### Product Info

|                            |   |
|----------------------------|---|
| <b>Amount :</b>            | 10 µg / 100 µg  |
| <b>Purification :</b>      | Purified from cell culture supernatant by affinity chromatography   |
| <b>Content :</b>           | Lyophilized from sterile PBS, pH 7.4. Normally 5 % - 8% trehalose is added as protectants before lyophilization. Please see Certificate of Analysis for specific instructions of reconstitution.  |
| <b>Storage condition :</b> | Store at -20°C to -80°C for 12 months in lyophilized form. After reconstitution, if not intended for use within a month, aliquot and store at -80°C (Avoid repeated freezing and thawing). Lyophilized proteins are shipped at ambient temperature. |

### Application Note

FACS 1:100

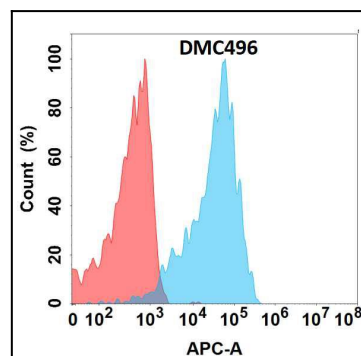


Figure 1. Flow cytometry analysis with Anti-LILRB2 (DMC496) on Expi293 cells transfected with human LILRB2 (Blue histogram) or Expi293 transfected with irrelevant protein (Red histogram).