

12-9461: Anti-CDH17 antibody(DMC485); IgG1 Chimeric mAb

Clonality :	Monoclonal
Clone Name :	DMC485
Application :	FACS
Reactivity :	Human
Uniprot ID :	Q12864
Alternative Name :	CDH16; HPT-1; HPT1
Isotype :	Rabbit/Human Fc chimeric IgG1

Description

Description :Anti-CDH17 antibody(DMC485); IgG1 Chimeric mAb

This gene is a member of the cadherin superfamily; genes encoding calcium-dependent; membrane-associated glycoproteins. The encoded protein is cadherin-like; consisting of an extracellular region; containing 7 cadherin domains; and a transmembrane region but lacking the conserved cytoplasmic domain. The protein is a component of the gastrointestinal tract and pancreatic ducts; acting as an intestinal proton-dependent peptide transporter in the first step in oral absorption of many medically important peptide-based drugs. The protein may also play a role in the morphological organization of liver and intestine. Alternative splicing results in multiple transcript variants. [provided by RefSeq; Jan 2009]

Product Info

Amount :	10 µg / 100 µg
Purification :	Purified from cell culture supernatant by affinity chromatography
Content :	Lyophilized from sterile PBS, pH 7.4. Normally 5 % - 8% trehalose is added as protectants before lyophilization. Please see Certificate of Analysis for specific instructions of reconstitution.
Storage condition :	Store at -20°C to -80°C for 12 months in lyophilized form. After reconstitution, if not intended for use within a month, aliquot and store at -80°C (Avoid repeated freezing and thawing). Lyophilized proteins are shipped at ambient temperature.

Application Note

FACS 1:100

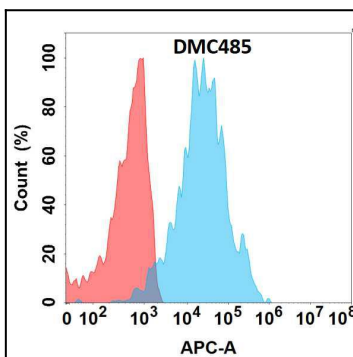


Figure 1. Flow cytometry analysis with Anti-CDH17 (DMC485) on Expi293 cells transfected with human CDH17 (Blue histogram) or Expi293 transfected with irrelevant protein (Red histogram).