

## 12-9460: Anti-CDH1 antibody(DMC484); IgG1 Chimeric mAb

<b>Clonality :</b>	Monoclonal
<b>Clone Name :</b>	DMC484
<b>Application :</b>	FACS
<b>Reactivity :</b>	Human
<b>Uniprot ID :</b>	P12830
<b>Alternative Name :</b>	Arc-1; BCDS1; CD324; CDHE; ECAD; LCAM; UVO
<b>Isotype :</b>	Rabbit/Human Fc chimeric IgG1

### Description

Description :Anti-CDH1 antibody(DMC484); IgG1 Chimeric mAb

This gene encodes a classical cadherin of the cadherin superfamily. Alternative splicing results in multiple transcript variants; at least one of which encodes a preproprotein that is proteolytically processed to generate the mature glycoprotein. This calcium-dependent cell-cell adhesion protein is comprised of five extracellular cadherin repeats; a transmembrane region and a highly conserved cytoplasmic tail. Mutations in this gene are correlated with gastric; breast; colorectal; thyroid and ovarian cancer. Loss of function of this gene is thought to contribute to cancer progression by increasing proliferation; invasion; and/or metastasis. The ectodomain of this protein mediates bacterial adhesion to mammalian cells and the cytoplasmic domain is required for internalization. This gene is present in a gene cluster with other members of the cadherin family on chromosome 16. [provided by RefSeq; Nov 2015]

### Product Info

<b>Amount :</b>	10 µg / 100 µg
<b>Purification :</b>	Purified from cell culture supernatant by affinity chromatography
<b>Content :</b>	Lyophilized from sterile PBS, pH 7.4. Normally 5 % - 8% trehalose is added as protectants before lyophilization. Please see Certificate of Analysis for specific instructions of reconstitution.
<b>Storage condition :</b>	Store at -20°C to -80°C for 12 months in lyophilized form. After reconstitution, if not intended for use within a month, aliquot and store at -80°C (Avoid repeated freezing and thawing). Lyophilized proteins are shipped at ambient temperature.

### Application Note

FACS 1:100

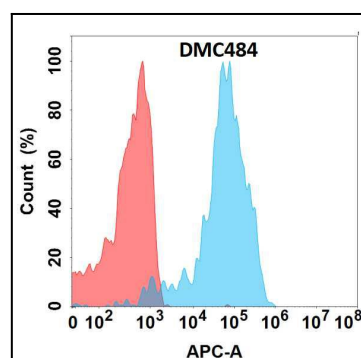


Figure 1. Flow cytometry analysis with Anti-CDH1 (DMC484) on Expi293 cells transfected with human CDH1 (Blue histogram) or Expi293 transfected with irrelevant protein (Red histogram).