

12-9457: Anti-ADGRE1 antibody(DMC481); IgG1 Chimeric mAb

Clonality :	Monoclonal
Clone Name :	DMC481
Application :	FACS
Reactivity :	Human
Uniprot ID :	Q14246
Alternative Name :	EMR1; TM7LN3
Isotype :	Rabbit/Human Fc chimeric IgG1

Description

Description :Anti-ADGRE1 antibody(DMC481); IgG1 Chimeric mAb

This gene encodes a protein that has a domain resembling seven transmembrane G protein-coupled hormone receptors (7TM receptors) at its C-terminus. The N-terminus of the encoded protein has six EGF-like modules; separated from the transmembrane segments by a serine:threonine-rich domain; a feature reminiscent of mucin-like; single-span; integral membrane glycoproteins with adhesive properties. Multiple alternatively spliced transcript variants encoding different isoforms have been found for this gene. [provided by RefSeq; Jan 2012]

Product Info

Amount :	10 µg / 100 µg
Purification :	Purified from cell culture supernatant by affinity chromatography
Content :	Lyophilized from sterile PBS, pH 7.4. Normally 5 % - 8% trehalose is added as protectants before lyophilization. Please see Certificate of Analysis for specific instructions of reconstitution.
Storage condition :	Store at -20°C to -80°C for 12 months in lyophilized form. After reconstitution, if not intended for use within a month, aliquot and store at -80°C (Avoid repeated freezing and thawing). Lyophilized proteins are shipped at ambient temperature.

Application Note

FACS 1:100

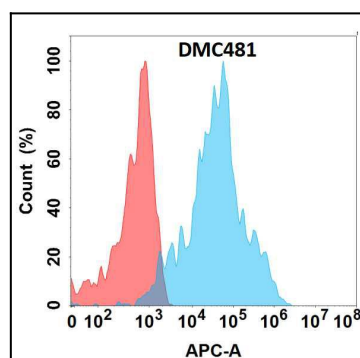


Figure 1. Flow cytometry analysis with Anti-ADGRE1 (DMC481) on Expi293 cells transfected with human ADGRE1 (Blue histogram) or Expi293 transfected with irrelevant protein (Red histogram).