

## 12-9442: Anti-CSPG4 antibody(DMC466); IgG1 Chimeric mAb

<b>Clonality :</b>	Monoclonal
<b>Clone Name :</b>	DMC466
<b>Application :</b>	FACS
<b>Reactivity :</b>	Human
<b>Uniprot ID :</b>	Q6UVK1
<b>Alternative Name :</b>	CSPG4A; HMW-MAA; MCSP; MCSPG; MEL-CSPG; MSK16; NG2
<b>Isotype :</b>	Rabbit/Human Fc chimeric IgG1

### Description

Description :Anti-CSPG4 antibody(DMC466); IgG1 Chimeric mAb

A human melanoma-associated chondroitin sulfate proteoglycan plays a role in stabilizing cell-substratum interactions during early events of melanoma cell spreading on endothelial basement membranes. CSPG4 represents an integral membrane chondroitin sulfate proteoglycan expressed by human malignant melanoma cells. [provided by RefSeq; Jul 2008]

### Product Info

<b>Amount :</b>	10 µg / 100 µg
<b>Purification :</b>	Purified from cell culture supernatant by affinity chromatography
<b>Content :</b>	Lyophilized from sterile PBS, pH 7.4. Normally 5 % - 8% trehalose is added as protectants before lyophilization. Please see Certificate of Analysis for specific instructions of reconstitution.
<b>Storage condition :</b>	Store at -20°C to -80°C for 12 months in lyophilized form. After reconstitution, if not intended for use within a month, aliquot and store at -80°C (Avoid repeated freezing and thawing). Lyophilized proteins are shipped at ambient temperature.

### Application Note

FACS 1:100

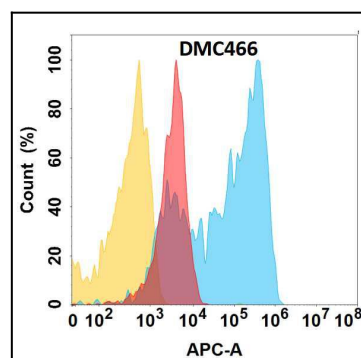


Figure 1. CSPG4 protein is highly expressed on the surface of Expi293 cell membrane. Flow cytometry analysis with Anti-CSPG4 (DMC466) on Expi293 cells transfected with human CSPG4 (Blue histogram) or Expi293 transfected with irrelevant protein (Red histogram), and Isotype antibody on Expi293 transfected with irrelevant protein (Orange histogram).