

12-9441: Anti-CCR1 antibody(DMC465); IgG1 Chimeric mAb

Clonality :	Monoclonal
Clone Name :	DMC465
Application :	FACS
Reactivity :	Human
Uniprot ID :	P32246
Alternative Name :	CD191; CKR-1; CKR1; CMKBR1; HM145; MIP1aR; SCYAR1
Isotype :	Rabbit/Human Fc chimeric IgG1

Description

Description :Anti-CCR1 antibody(DMC465); IgG1 Chimeric mAb

This gene encodes a member of the beta chemokine receptor family; which is predicted to be a seven transmembrane protein similar to G protein-coupled receptors. The ligands of this receptor include macrophage inflammatory protein 1 alpha (MIP-1 alpha); regulated on activation normal T expressed and secreted protein (RANTES); monocyte chemoattractant protein 3 (MCP-3); and myeloid progenitor inhibitory factor-1 (MPlF-1). Chemokines and their receptors mediated signal transduction are critical for the recruitment of effector immune cells to the site of inflammation. Knockout studies of the mouse homolog suggested the roles of this gene in host protection from inflammatory response; and susceptibility to virus and parasite. This gene and other chemokine receptor genes; including CCR2; CCRL2; CCR3; CCR5 and CCXCR1; are found to form a gene cluster on chromosome 3p. [provided by RefSeq; Jul 2008]

Product Info

Amount :	10 µg / 100 µg
Purification :	Purified from cell culture supernatant by affinity chromatography
Content :	Lyophilized from sterile PBS, pH 7.4. Normally 5 % - 8% trehalose is added as protectants before lyophilization. Please see Certificate of Analysis for specific instructions of reconstitution.
Storage condition :	Store at -20°C to -80°C for 12 months in lyophilized form. After reconstitution, if not intended for use within a month, aliquot and store at -80°C (Avoid repeated freezing and thawing). Lyophilized proteins are shipped at ambient temperature.

Application Note

FACS 1:100

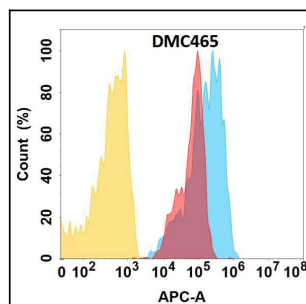


Figure 1. CCR1 protein is highly expressed on the surface of Expi293 cell membrane. Flow cytometry analysis with Anti-CCR1 (DMC465) on Expi293 cells transfected with human CCR1 (Blue histogram) or Expi293 transfected with irrelevant protein (Red histogram), and Isotype antibody on Expi293 transfected with irrelevant protein (Orange histogram).