

12-9438: Anti-PRLR antibody(DMC462); IgG1 Chimeric mAb

Clonality :	Monoclonal
Clone Name :	DMC462
Application :	FACS
Reactivity :	Human
Uniprot ID :	P16471
Alternative Name :	Prolactin receptor; PRL-R
Isotype :	Rabbit/Human Fc chimeric IgG1

Description

Description :Anti-PRLR antibody(DMC462); IgG1 Chimeric mAb
This gene encodes a receptor for the anterior pituitary hormone; prolactin; and belongs to the type I cytokine receptor family. Prolactin-dependent signaling occurs as the result of ligand-induced dimerization of the prolactin receptor. Several alternatively spliced transcript variants encoding different membrane-bound and soluble isoforms have been described for this gene; which may function to modulate the endocrine and autocrine effects of prolactin in normal tissue and cancer. [provided by RefSeq; Feb 2011]

Product Info

Amount :	10 µg / 100 µg
Purification :	Purified from cell culture supernatant by affinity chromatography
Content :	Lyophilized from sterile PBS, pH 7.4. Normally 5 % - 8% trehalose is added as protectants before lyophilization. Please see Certificate of Analysis for specific instructions of reconstitution.
Storage condition :	Store at -20°C to -80°C for 12 months in lyophilized form. After reconstitution, if not intended for use within a month, aliquot and store at -80°C (Avoid repeated freezing and thawing). Lyophilized proteins are shipped at ambient temperature.

Application Note

FACS 1:100

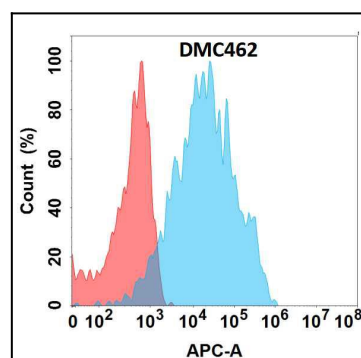


Figure 1. Flow cytometry analysis with Anti-PRLR (DMC462) on Expi293 cells transfected with human PRLR (Blue histogram) or Expi293 transfected with irrelevant protein (Red histogram).