

## 12-9435: Anti-CCR2 antibody(DMC447); IgG1 Chimeric mAb

<b>Clonality :</b>	Monoclonal
<b>Clone Name :</b>	DMC447
<b>Application :</b>	FACS
<b>Reactivity :</b>	Human
<b>Uniprot ID :</b>	P41597
<b>Alternative Name :</b>	CC-CKR-2; MCP-1-R; CD192
<b>Isotype :</b>	Rabbit/Human Fc chimeric IgG1

### Description

Description :Anti-CCR2 antibody(DMC447); IgG1 Chimeric mAb

The protein encoded by this gene is a receptor for monocyte chemoattractant protein-1; a chemokine which specifically mediates monocyte chemotaxis. Monocyte chemoattractant protein-1 is involved in monocyte infiltration in inflammatory diseases such as rheumatoid arthritis as well as in the inflammatory response against tumors. The encoded protein mediates agonist-dependent calcium mobilization and inhibition of adenylyl cyclase. This protein can also be a coreceptor with CD4 for HIV-1 infection. This gene is located in the chemokine receptor gene cluster region of chromosome 3.

### Product Info

<b>Amount :</b>	10 µg / 100 µg
<b>Purification :</b>	Purified from cell culture supernatant by affinity chromatography
<b>Content :</b>	Lyophilized from sterile PBS, pH 7.4. Normally 5 % - 8% trehalose is added as protectants before lyophilization. Please see Certificate of Analysis for specific instructions of reconstitution.
<b>Storage condition :</b>	Store at -20°C to -80°C for 12 months in lyophilized form. After reconstitution, if not intended for use within a month, aliquot and store at -80°C (Avoid repeated freezing and thawing). Lyophilized proteins are shipped at ambient temperature.

### Application Note

FACS 1:100

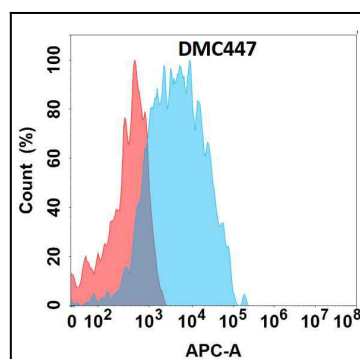


Figure 1. Flow cytometry analysis with Anti-CCR2 (DMC447) on Expi293 cells transfected with human CCR2 (Blue histogram) or Expi293 transfected with irrelevant protein (Red histogram).