

12-9433: Anti-SLAMF1 antibody(DMC445); IgG1 Chimeric mAb

Clonality :	Monoclonal
Clone Name :	DMC445
Application :	FACS
Reactivity :	Human
Uniprot ID :	Q13291
Alternative Name :	SLAMF1; CD150; CDw150; SLAM; IPO-3
Isotype :	Rabbit/Human Fc chimeric IgG1

Description

Description :Anti-SLAMF1 antibody(DMC445); IgG1 Chimeric mAb

SLAMF1 (Signaling Lymphocytic Activation Molecule Family Member 1) is a Protein Coding gene. Diseases associated with SLAMF1 include Measles and Subacute Sclerosing Panencephalitis. Among its related pathways are Dendritic Cells Developmental Lineage Pathway and T Cell Co-Signaling Pathway: Ligand-Receptor Interactions. Gene Ontology (GO) annotations related to this gene include antigen binding. An important paralog of this gene is LY9.

Product Info

Amount :	10 µg / 100 µg
Purification :	Purified from cell culture supernatant by affinity chromatography
Content :	Lyophilized from sterile PBS, pH 7.4. Normally 5 % - 8% trehalose is added as protectants before lyophilization. Please see Certificate of Analysis for specific instructions of reconstitution.
Storage condition :	Store at -20°C to -80°C for 12 months in lyophilized form. After reconstitution, if not intended for use within a month, aliquot and store at -80°C (Avoid repeated freezing and thawing). Lyophilized proteins are shipped at ambient temperature.

Application Note

FACS 1:100

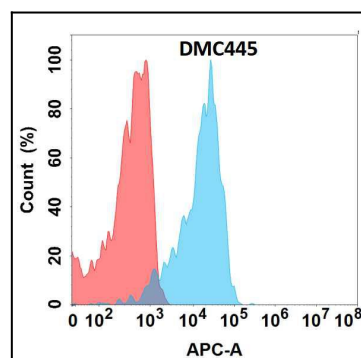


Figure 1. Flow cytometry analysis with Anti-SLAMF1 (DMC445) on Expi293 cells transfected with human SLAMF1 (Blue histogram) or Expi293 transfected with irrelevant protein (Red histogram).