

12-9428: Anti-UPA antibody(DMC440); IgG1 Chimeric mAb

Clonality :	Monoclonal
Clone Name :	DMC440
Application :	FACS
Reactivity :	Human
Uniprot ID :	P00749
Alternative Name :	ATF; BDPLT5; QPD; u-PA; UPA; URK
Isotype :	Rabbit/Human Fc chimeric IgG1

Description

Description :Anti-UPA antibody(DMC440); IgG1 Chimeric mAb

This gene encodes a secreted serine protease that converts plasminogen to plasmin. The encoded preproprotein is proteolytically processed to generate A and B polypeptide chains. These chains associate via a single disulfide bond to form the catalytically inactive high molecular weight urokinase-type plasminogen activator (HMW-uPA). HMW-uPA can be further processed into the catalytically active low molecular weight urokinase-type plasminogen activator (LMW-uPA). This low molecular weight form does not bind to the urokinase-type plasminogen activator receptor. Mutations in this gene may be associated with Quebec platelet disorder and late-onset Alzheimer's disease. Alternative splicing results in multiple transcript variants; at least one of which encodes an isoform that is proteolytically processed.

Product Info

Amount :	10 µg / 100 µg
Purification :	Purified from cell culture supernatant by affinity chromatography
Content :	Lyophilized from sterile PBS, pH 7.4. Normally 5 % - 8% trehalose is added as protectants before lyophilization. Please see Certificate of Analysis for specific instructions of reconstitution.
Storage condition :	Store at -20°C to -80°C for 12 months in lyophilized form. After reconstitution, if not intended for use within a month, aliquot and store at -80°C (Avoid repeated freezing and thawing). Lyophilized proteins are shipped at ambient temperature.

Application Note

FACS 1:100

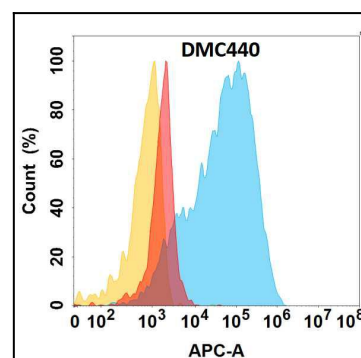


Figure 1. Flow cytometry analysis with Anti-UPA (DMC440) on Expi293 cells transfected with human UPA (Blue histogram) or Expi293 transfected with irrelevant protein (Red histogram), and Isotype antibody on Expi293 transfected with irrelevant protein (Orange histogram).