

## 12-9427: Anti-CD62L antibody(DMC439); IgG1 Chimeric mAb

<b>Clonality :</b>	Monoclonal
<b>Clone Name :</b>	DMC439
<b>Application :</b>	FACS
<b>Reactivity :</b>	Human
<b>Uniprot ID :</b>	P14151
<b>Alternative Name :</b>	CD62L; LAM1; LECAM1; LEU8; LNHR; LSEL; LYAM1; PLNHR; TQ1
<b>Isotype :</b>	Rabbit/Human Fc chimeric IgG1

### Description

Description :Anti-CD62L antibody(DMC439); IgG1 Chimeric mAb

This gene encodes a cell surface adhesion molecule that belongs to a family of adhesion:homings receptors. The encoded protein contains a C-type lectin-like domain; a calcium-binding epidermal growth factor-like domain; and two short complement-like repeats. The gene product is required for binding and subsequent rolling of leucocytes on endothelial cells; facilitating their migration into secondary lymphoid organs and inflammation sites. Single-nucleotide polymorphisms in this gene have been associated with various diseases including immunoglobulin A nephropathy. Alternatively spliced transcript variants have been found for this gene.

### Product Info

<b>Amount :</b>	10 µg / 100 µg
<b>Purification :</b>	Purified from cell culture supernatant by affinity chromatography
<b>Content :</b>	Lyophilized from sterile PBS, pH 7.4. Normally 5 % - 8% trehalose is added as protectants before lyophilization. Please see Certificate of Analysis for specific instructions of reconstitution.
<b>Storage condition :</b>	Store at -20°C to -80°C for 12 months in lyophilized form. After reconstitution, if not intended for use within a month, aliquot and store at -80°C (Avoid repeated freezing and thawing). Lyophilized proteins are shipped at ambient temperature.

### Application Note

FACS 1:100

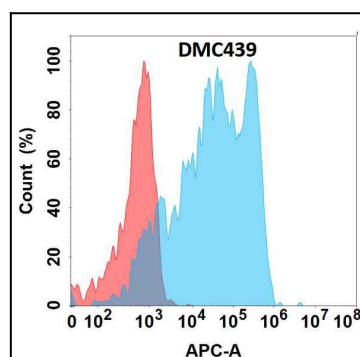


Figure 1. Flow cytometry analysis with Anti-CD62L (DMC439) on Expi293 cells transfected with human CD62L (Blue histogram) or Expi293 transfected with irrelevant protein (Red histogram).