

## 12-9425: Anti-M-CSF antibody(DMC437); IgG1 Chimeric mAb

<b>Clonality :</b>	Monoclonal
<b>Clone Name :</b>	DMC437
<b>Application :</b>	FACS
<b>Reactivity :</b>	Human
<b>Uniprot ID :</b>	P09603
<b>Alternative Name :</b>	CSF-1; MCSF
<b>Isotype :</b>	Rabbit/Human Fc chimeric IgG1

### Description

Description :Anti-M-CSF antibody(DMC437); IgG1 Chimeric mAb

The protein encoded by this gene is a cytokine that controls the production; differentiation; and function of macrophages. The active form of the protein is found extracellularly as a disulfide-linked homodimer; and is thought to be produced by proteolytic cleavage of membrane-bound precursors. The encoded protein may be involved in development of the placenta. Alternate splicing results in multiple transcript variants.

### Product Info

<b>Amount :</b>	10 µg / 100 µg
<b>Purification :</b>	Purified from cell culture supernatant by affinity chromatography
<b>Content :</b>	Lyophilized from sterile PBS, pH 7.4. Normally 5 % - 8% trehalose is added as protectants before lyophilization. Please see Certificate of Analysis for specific instructions of reconstitution.
<b>Storage condition :</b>	Store at -20°C to -80°C for 12 months in lyophilized form. After reconstitution, if not intended for use within a month, aliquot and store at -80°C (Avoid repeated freezing and thawing). Lyophilized proteins are shipped at ambient temperature.

### Application Note

FACS 1:100

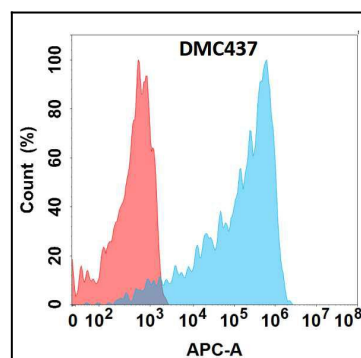


Figure 1. Flow cytometry analysis with Anti-M-CSF (DMC437) on Expi293 cells transfected with human M-CSF (Blue histogram) or Expi293 transfected with irrelevant protein (Red histogram).