

## 12-9420: Anti-TSLP antibody(DMC426); IgG1 Chimeric mAb

<b>Clonality :</b>	Monoclonal
<b>Clone Name :</b>	DMC426
<b>Application :</b>	FACS
<b>Reactivity :</b>	Human
<b>Uniprot ID :</b>	Q969D9
<b>Alternative Name :</b>	TSLP
<b>Isotype :</b>	Rabbit/Human Fc chimeric IgG1

### Description

Description :Anti-TSLP antibody(DMC426); IgG1 Chimeric mAb

This gene encodes a hemopoietic cytokine proposed to signal through a heterodimeric receptor complex composed of the thymic stromal lymphopoietin receptor and the IL-7R alpha chain. It mainly impacts myeloid cells and induces the release of T cell-attracting chemokines from monocytes and enhances the maturation of CD11c( ) dendritic cells. The protein promotes T helper type 2 (TH2) cell responses that are associated with immunity in various inflammatory diseases; including asthma; allergic inflammation and chronic obstructive pulmonary disease. The protein is therefore considered a potential therapeutic target for the treatment of such diseases. In addition; the shorter (predominant) isoform is an antimicrobial protein; displaying antibacterial and antifungal activity against *B. cereus*; *E. coli*; *E. faecalis*; *S. mitis*; *S. epidermidis*; and *C. albicans*. Alternative splicing of this gene results in multiple transcript variants.

### Product Info

<b>Amount :</b>	10 µg / 100 µg
<b>Purification :</b>	Purified from cell culture supernatant by affinity chromatography
<b>Content :</b>	Lyophilized from sterile PBS, pH 7.4. Normally 5 % - 8% trehalose is added as protectants before lyophilization. Please see Certificate of Analysis for specific instructions of reconstitution.
<b>Storage condition :</b>	Store at -20°C to -80°C for 12 months in lyophilized form. After reconstitution, if not intended for use within a month, aliquot and store at -80°C (Avoid repeated freezing and thawing). Lyophilized proteins are shipped at ambient temperature.

### Application Note

FACS 1:100

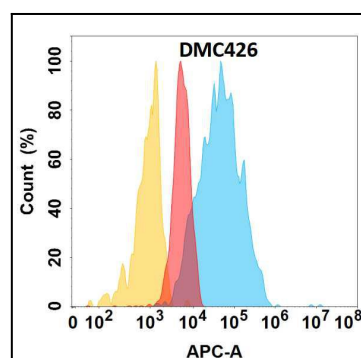


Figure 1. TSLP protein is highly expressed on the surface of Expi293 cell membrane. Flow cytometry analysis with Anti-TSLP (DMC426) on Expi293 cells transfected with human TSLP (Blue histogram) or Expi293 transfected with irrelevant protein (Red histogram), and Isotype antibody on Expi293 transfected with irrelevant protein (Orange histogram).