

12-9417: Anti-CD2 antibody(DMC423); IgG1 Chimeric mAb

Clonality :	Monoclonal
Clone Name :	DMC423
Application :	FACS
Reactivity :	Human
Uniprot ID :	P06729
Alternative Name :	LFA-2; SRBC; T11
Isotype :	Rabbit/Human Fc chimeric IgG1

Description

Description :Anti-CD2 antibody(DMC423); IgG1 Chimeric mAb

The protein encoded by this gene is a surface antigen found on all peripheral blood T-cells. The encoded protein interacts with LFA3 (CD58) on antigen presenting cells to optimize immune recognition. A locus control region (LCR) has been found in the 3' flanking sequence of this gene.

Product Info

Amount :	10 µg / 100 µg
Purification :	Purified from cell culture supernatant by affinity chromatography
Content :	Lyophilized from sterile PBS, pH 7.4. Normally 5 % - 8% trehalose is added as protectants before lyophilization. Please see Certificate of Analysis for specific instructions of reconstitution.
Storage condition :	Store at -20°C to -80°C for 12 months in lyophilized form. After reconstitution, if not intended for use within a month, aliquot and store at -80°C (Avoid repeated freezing and thawing). Lyophilized proteins are shipped at ambient temperature.

Application Note

FACS 1:100

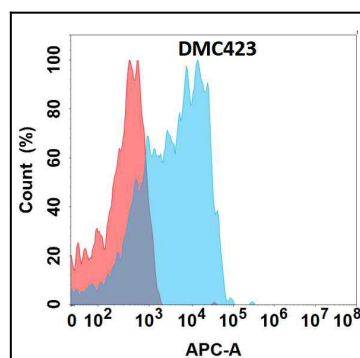


Figure 1. Flow cytometry analysis with Anti-CD2 (DMC423) on Expi293 cells transfected with human CD2 (Blue histogram) or Expi293 transfected with irrelevant protein (Red histogram).