

## 12-9416: Anti-IGFBP7 antibody(DMC422); IgG1 Chimeric mAb

<b>Clonality :</b>	Monoclonal
<b>Clone Name :</b>	DMC422
<b>Application :</b>	FACS
<b>Reactivity :</b>	Human
<b>Uniprot ID :</b>	Q16270
<b>Alternative Name :</b>	IBP-7; TAF; IGFBP-rP1; MAC25 protein
<b>Isotype :</b>	Rabbit/Human Fc chimeric IgG1

### Description

Description :Anti-IGFBP7 antibody(DMC422); IgG1 Chimeric mAb

This gene encodes a member of the insulin-like growth factor (IGF)-binding protein (IGFBP) family. IGFBPs bind IGFs with high affinity; and regulate IGF availability in body fluids and tissues and modulate IGF binding to its receptors. This protein binds IGF-I and IGF-II with relatively low affinity; and belongs to a subfamily of low-affinity IGFBPs. It also stimulates prostacyclin production and cell adhesion. Alternatively spliced transcript variants encoding different isoforms have been described for this gene; and one variant has been associated with retinal arterial macroaneurysm (PMID:21835307).

### Product Info

<b>Amount :</b>	10 µg / 100 µg
<b>Purification :</b>	Purified from cell culture supernatant by affinity chromatography
<b>Content :</b>	Lyophilized from sterile PBS, pH 7.4. Normally 5 % - 8% trehalose is added as protectants before lyophilization. Please see Certificate of Analysis for specific instructions of reconstitution.
<b>Storage condition :</b>	Store at -20°C to -80°C for 12 months in lyophilized form. After reconstitution, if not intended for use within a month, aliquot and store at -80°C (Avoid repeated freezing and thawing). Lyophilized proteins are shipped at ambient temperature.

### Application Note

FACS 1:100

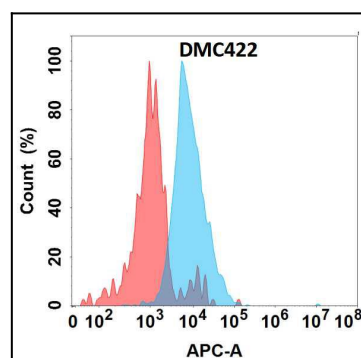


Figure 1. Flow cytometry analysis with Anti-IGFBP7 (DMC422) on Expi293 cells transfected with human IGFBP7 (Blue histogram) or Expi293 transfected with irrelevant protein (Red histogram).