

## 12-9413: Anti-IL-6 antibody(DMC419); IgG1 Chimeric mAb

<b>Clonality :</b>	Monoclonal
<b>Clone Name :</b>	DMC419
<b>Application :</b>	FACS
<b>Reactivity :</b>	Human
<b>Uniprot ID :</b>	P05231
<b>Alternative Name :</b>	IL6; Interleukin-6; BSF2; HSF; IFNB2
<b>Isotype :</b>	Rabbit/Human Fc chimeric IgG1

### Description

Description :Anti-IL-6 antibody(DMC419); IgG1 Chimeric mAb

This gene encodes a cytokine that functions in inflammation and the maturation of B cells. In addition; the encoded protein has been shown to be an endogenous pyrogen capable of inducing fever in people with autoimmune diseases or infections. The protein is primarily produced at sites of acute and chronic inflammation; where it is secreted into the serum and induces a transcriptional inflammatory response through interleukin 6 receptor; alpha. The functioning of this gene is implicated in a wide variety of inflammation-associated disease states; including susceptibility to diabetes mellitus and systemic juvenile rheumatoid arthritis. Alternative splicing results in multiple transcript variants.

### Product Info

<b>Amount :</b>	10 µg / 100 µg
<b>Purification :</b>	Purified from cell culture supernatant by affinity chromatography
<b>Content :</b>	Lyophilized from sterile PBS, pH 7.4. Normally 5 % - 8% trehalose is added as protectants before lyophilization. Please see Certificate of Analysis for specific instructions of reconstitution.
<b>Storage condition :</b>	Store at -20°C to -80°C for 12 months in lyophilized form. After reconstitution, if not intended for use within a month, aliquot and store at -80°C (Avoid repeated freezing and thawing). Lyophilized proteins are shipped at ambient temperature.

### Application Note

FACS 1:100

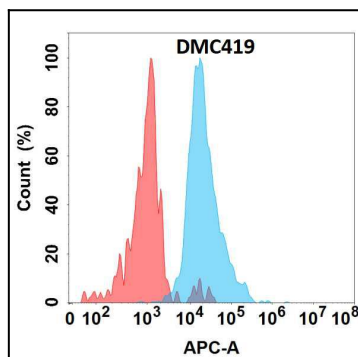


Figure 1. Flow cytometry analysis with Anti-IL-6 (DMC419) on Expi293 cells transfected with human IL-6 (Blue histogram) or Expi293 transfected with irrelevant protein (Red histogram).