

## 32-18545: Mouse IGF-1R Protein, His Tag

**Uniprot ID :** Q60751  
**Alternative Name :** hyft;CD221;IGF1R

### Description

**Description :** Recombinant mouse IGF-1R protein with C-terminal 6 $\text{Å}$ —His tag

**Background :** Enables insulin-like growth factor binding activity. Involved in several processes, including adrenal gland development; positive regulation of cold-induced thermogenesis; and positive regulation of meiotic cell cycle. Acts upstream of or within several processes, including gland development; peptidyl-tyrosine autophosphorylation; and regulation of intracellular signal transduction. Located in T-tubule. Is integral component of membrane. Is expressed in several structures, including alimentary system; brain; genitourinary system; limb; and lung. Human ortholog(s) of this gene implicated in several diseases, including dementia (multiple); kidney cancer (multiple); liver disease (multiple); nervous system cancer (multiple); and neurodegenerative disease (multiple). Orthologous to human IGF1R (insulin like growth factor 1 receptor).

**Molecular Characterization:** mass of 104.5 kDa after removal of the signal peptide.

**Tag :** C-6 $\text{Å}$ —His Tag

### Product Info

**Amount :** 50  $\mu\text{g}$  / 100  $\mu\text{g}$

**Purification :** The purity of the protein is greater than 85% as determined by SDS-PAGE and Coomassie blue staining.

**Content :** Lyophilized from sterile PBS, pH 7.4. Normally 5 % - 8% trehalose is added as protectants before lyophilization.

**Storage condition :** Store at -20°C to -80°C for 12 months in lyophilized form. After reconstitution, if not intended for use within a month, aliquot and store at -80°C (Avoid repeated freezing and thawing). Lyophilized proteins are shipped at ambient temperature.

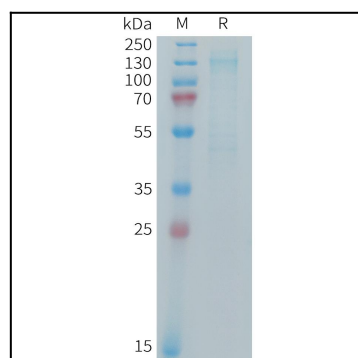


Figure 1. Mouse IGF-1R Protein, His Tag on SDS-PAGE under reducing condition.