

32-18461: Cynomolgus SELPLG Protein, His Tag

Uniprot ID : A0A7N9CVJ8

Alternative Name : PSGL-1,PSGL1,CD162,Selectin P ligand

Description

Description : Recombinant Cynomolgus SELPLG protein with C-terminal 6 Å —His tag

Background : This gene encodes a glycoprotein that functions as a high affinity counter-receptor for the cell adhesion molecules P-, E- and L- selectin expressed on myeloid cells and stimulated T lymphocytes. As such, this protein plays a critical role in leukocyte trafficking during inflammation by tethering of leukocytes to activated platelets or endothelia expressing selectins. This protein requires two post-translational modifications, tyrosine sulfation and the addition of the sialyl Lewis x tetrasaccharide (sLex) to its O-linked glycans, for its high-affinity binding activity. Aberrant expression of this gene and polymorphisms in this gene are associated with defects in the innate and adaptive immune response. Alternate splicing results in multiple transcript variants.

Molecular Characterization: mass of 34.3 kDa after removal of the signal peptide.

Tag : C-6 Å —His Tag

Product Info

Amount : 50 μg / 100 μg

Purification : The purity of the protein is greater than 85% as determined by SDS-PAGE and Coomassie blue staining.

Content : Lyophilized from sterile PBS, pH 7.4. Normally 5 % - 8% trehalose is added as protectants before lyophilization.

Storage condition : Store at -20°C to -80°C for 12 months in lyophilized form. After reconstitution, if not intended for use within a month, aliquot and store at -80°C (Avoid repeated freezing and thawing). Lyophilized proteins are shipped at ambient temperature.

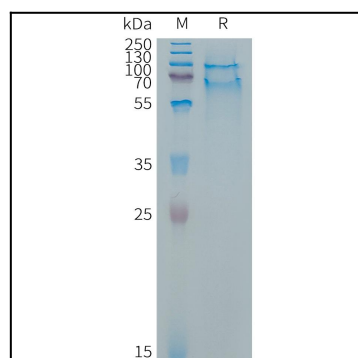


Figure 1. Cynomolgus SELPLG Protein, His Tag on SDS-PAGE under reducing condition.