

32-18460: Cynomolgus IL18BP Protein, His Tag

Uniprot ID : A0A2K5UDJ4
Alternative Name : IL18BP;IL18BPa;Tadekinig-alfa

Description

Description : Recombinant Cynomolgus IL18BP protein with C-terminal 6 Å —His tag

Background : Interleukin-18-binding protein (IL-18BP) is a constitutively expressed and secreted protein. IL-18BP is a cytokine receptor that belongs to the interleukin 1 receptor family. This receptor specifically binds interleukin 18 (IL18) and is essential for IL18 mediated signal transduction. IFN-alpha and IL12 are reported to induce the expression of this receptor in NK and T cells. This gene along with four other members of the interleukin 1 receptor family, including IL1R2, IL1R1, ILRL2 (IL-1Rrp2), and IL1RL1 (T1/ST2), form a gene cluster on chromosome 2q. The adjacently located family members IL18 Receptor 1 (IL18R1) and IL18 receptor accessory protein (IL18RAP) may also be important in the development of asthma and atopy. IL-18 binding protein (IL-18BP) was only moderately elevated, resulting in a high level of biologically active free IL-18 in HPS. A severe IL-18/IL-18BP imbalance results in Th-1 lymphocyte and macrophage activation, which escapes control by NK-cell cytotoxicity and may allow for secondary HPS in patients with underlying diseases.

Molecular Characterization: mass of 20.1 kDa after removal of the signal peptide.

Tag : C-6 Å —His Tag

Product Info

Amount : 50 μg / 100 μg

Purification : The purity of the protein is greater than 85% as determined by SDS-PAGE and Coomassie blue staining.

Content : Lyophilized from sterile PBS, pH 7.4. Normally 5 % - 8% trehalose is added as protectants before lyophilization.

Storage condition : Store at -20°C to -80°C for 12 months in lyophilized form. After reconstitution, if not intended for use within a month, aliquot and store at -80°C (Avoid repeated freezing and thawing). Lyophilized proteins are shipped at ambient temperature.

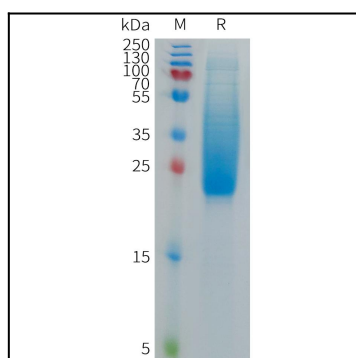


Figure 1. Cynomolgus IL18BP Protein, His Tag on SDS-PAGE under reducing condition.