

## 32-18449: Human CD300C Protein, hFc Tag

**Uniprot ID :** Q08708

**Alternative Name :** LIR; CLM-6; CMRF35; IGSF16; CMRF-35; CMRF35A; CMRF-35A; CMRF35A1; CMRF35-A1

### Description

**Description :** Recombinant human CD300C Protein with C-terminal human Fc tag

**Background :** The CMRF35 antigen, which was identified by reactivity with a monoclonal antibody, is present on monocytes, neutrophils, and some T and B lymphocytes (Jackson et al., 1992 [PubMed 1349532]). [supplied by OMIM, Mar 2008]

**Molecular Characterization:** mass of 44.0 kDa after removal of the signal peptide. The apparent molecular mass of CD300C-hFc is approximately 55-70 kDa due to glycosylation.

**Tag :** C-Human Fc tag

### Product Info

**Amount :** 50 µg / 100 µg

**Purification :** The purity of the protein is greater than 95% as determined by SDS-PAGE and Coomassie blue staining.

**Content :** Lyophilized from sterile PBS, pH 7.4. Normally 5 % - 8% trehalose is added as protectants before lyophilization.

**Storage condition :** Store at -20°C to -80°C for 12 months in lyophilized form. After reconstitution, if not intended for use within a month, aliquot and store at -80°C (Avoid repeated freezing and thawing). Lyophilized proteins are shipped at ambient temperature.

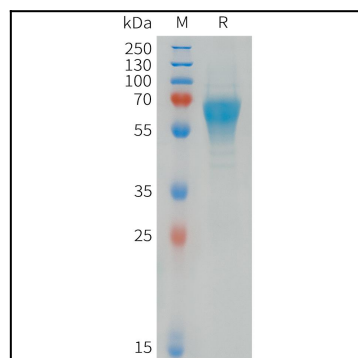


Figure 1. Human CD300C Protein, hFc Tag on SDS-PAGE under reducing condition.