

32-18434: Human FSHB Protein, hFc Tag

Uniprot ID : P01225

Alternative Name : HH24

Description

Description : Recombinant human FSHB Protein with C-terminal human Fc tag

Background : The pituitary glycoprotein hormone family includes follicle-stimulating hormone, luteinizing hormone, chorionic gonadotropin, and thyroid-stimulating hormone. All of these glycoproteins consist of an identical alpha subunit and a hormone-specific beta subunit. This gene encodes the beta subunit of follicle-stimulating hormone. In conjunction with luteinizing hormone, follicle-stimulating hormone induces egg and sperm production. Alternative splicing results in two transcript variants encoding the same protein.

Molecular Characterization: mass of 38.6 kDa after removal of the signal peptide. The apparent molecular mass of FSHB-hFc is approximately 35-55 kDa due to glycosylation.

Tag : C-Human Fc tag

Product Info

Amount : 50 µg / 100 µg

Purification : The purity of the protein is greater than 95% as determined by SDS-PAGE and Coomassie blue staining.

Content : Lyophilized from sterile PBS, pH 7.4. Normally 5 % - 8% trehalose is added as protectants before lyophilization.

Storage condition : Store at -20°C to -80°C for 12 months in lyophilized form. After reconstitution, if not intended for use within a month, aliquot and store at -80°C (Avoid repeated freezing and thawing). Lyophilized proteins are shipped at ambient temperature.

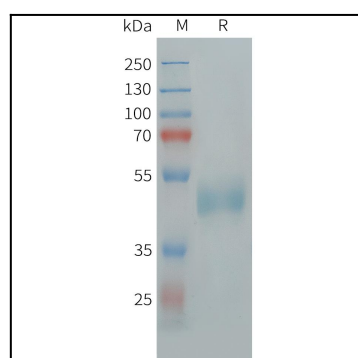


Figure 1. Human FSHB Protein, hFc Tag on SDS-PAGE under reducing condition.