

## 32-18431: Human GIP Protein, hFc Tag

**Uniprot ID :** P09681

**Alternative Name :** GIP

### Description

**Description :** Recombinant human GIP Protein with C-terminal human Fc tag

**Background :** This gene encodes an incretin hormone and belongs to the glucagon superfamily. The encoded protein is important in maintaining glucose homeostasis as it is a potent stimulator of insulin secretion from pancreatic beta-cells following food ingestion and nutrient absorption. This gene stimulates insulin secretion via its G protein-coupled receptor activation of adenylyl cyclase and other signal transduction pathways. It is a relatively poor inhibitor of gastric acid secretion.

**Molecular Characterization:** mass of 34.3 kDa after removal of the signal peptide. The apparent molecular mass of GIP-hFc is approximately 35-55 kDa due to glycosylation.

**Tag :** C-Human Fc tag

### Product Info

**Amount :** 50 µg / 100 µg

**Purification :** The purity of the protein is greater than 95% as determined by SDS-PAGE and Coomassie blue staining.

**Content :** Lyophilized from sterile PBS, pH 7.4. Normally 5 % - 8% trehalose is added as protectants before lyophilization.

**Storage condition :** Store at -20°C to -80°C for 12 months in lyophilized form. After reconstitution, if not intended for use within a month, aliquot and store at -80°C (Avoid repeated freezing and thawing). Lyophilized proteins are shipped at ambient temperature.

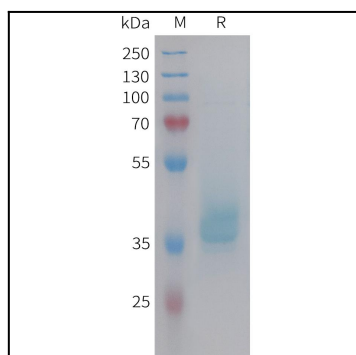


Figure 1. Human GIP Protein, hFc Tag on SDS-PAGE under reducing condition.