

## 32-18429: Human C6 Protein, His Tag

**Uniprot ID :** P13671

**Alternative Name :** C6

### Description

**Description :** Recombinant human C6 Protein with C-terminal 6 $\text{\AA}$ —His tag

**Background :** This gene encodes a component of the complement cascade. The encoded protein is part of the membrane attack complex that can be incorporated into the cell membrane and cause cell lysis. Mutations in this gene are associated with complement component-6 deficiency. Transcript variants encoding the same protein have been described.

**Molecular Characterization:** mass of 103.2 kDa after removal of the signal peptide. The apparent molecular mass of C6-His is approximately 100-130 kDa due to glycosylation.

**Tag :** C-6 $\text{\AA}$ —His tag

### Product Info

**Amount :** 50  $\mu\text{g}$  / 100  $\mu\text{g}$

**Purification :** The purity of the protein is greater than 85% as determined by SDS-PAGE and Coomassie blue staining.

**Content :** Lyophilized from sterile PBS, pH 7.4. Normally 5 % - 8% trehalose is added as protectants before lyophilization.

**Storage condition :** Store at  $-20^{\circ}\text{C}$  to  $-80^{\circ}\text{C}$  for 12 months in lyophilized form. After reconstitution, if not intended for use within a month, aliquot and store at  $-80^{\circ}\text{C}$  (Avoid repeated freezing and thawing). Lyophilized proteins are shipped at ambient temperature.

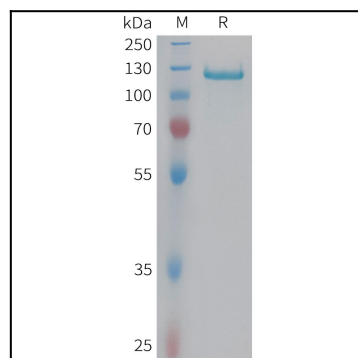


Figure 1. Human C6 Protein, His Tag on SDS-PAGE under reducing condition.