

## 32-18420: Human TIM3 Protein, hFc Tag

**Uniprot ID :** Q8TDQ0

**Alternative Name :** HAVCR2; CD366; KIM-3; SPTCL; TIMD3; Tim-3; TIMD-3; HAVcr-2

### Description

**Description :** Recombinant human TIM3 Protein with C-terminal human Fc tag

**Background :** The protein encoded by this gene belongs to the immunoglobulin superfamily, and TIM family of proteins. CD4-positive T helper lymphocytes can be divided into types 1 (Th1) and 2 (Th2) on the basis of their cytokine secretion patterns. Th1 cells are involved in cell-mediated immunity to intracellular pathogens and delayed-type hypersensitivity reactions, whereas, Th2 cells are involved in the control of extracellular helminthic infections and the promotion of atopic and allergic diseases. This protein is a Th1-specific cell surface protein that regulates macrophage activation, and inhibits Th1-mediated auto- and alloimmune responses, and promotes immunological tolerance.

**Molecular Characterization:** mass of 46.1 kDa after removal of the signal peptide. The apparent molecular mass of TIM3-hFc is approximately 55-100 kDa due to glycosylation.

**Tag :** C-Human Fc tag

### Product Info

**Amount :** 50 µg / 100 µg

**Purification :** The purity of the protein is greater than 95% as determined by SDS-PAGE and Coomassie blue staining.

**Content :** Lyophilized from sterile PBS, pH 7.4. Normally 5 % - 8% trehalose is added as protectants before lyophilization.

**Storage condition :** Store at -20°C to -80°C for 12 months in lyophilized form. After reconstitution, if not intended for use within a month, aliquot and store at -80°C (Avoid repeated freezing and thawing). Lyophilized proteins are shipped at ambient temperature.

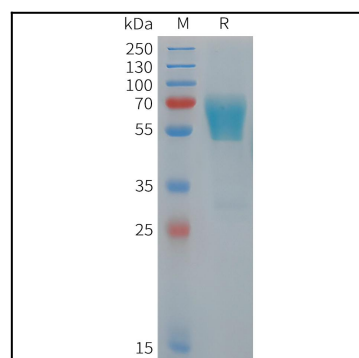


Figure 1. Human TIM3 Protein, hFc Tag on SDS-PAGE under reducing condition.