

32-18415: Human CD209 Protein, His Tag

Uniprot ID : Q9NNX6

Alternative Name : CDSIGN; CLEC4L; DC-SIGN; DC-SIGN1; hDC-SIGN

Description

Description : Recombinant human CD209 Protein with N-terminal 6 \times His tag

Background : This gene encodes a C-type lectin that functions in cell adhesion and pathogen recognition. This receptor recognizes a wide range of evolutionarily divergent pathogens with a large impact on public health, including leprosy and tuberculosis mycobacteria, the Ebola, hepatitis C, HIV-1 and Dengue viruses, and the SARS-CoV acute respiratory syndrome coronavirus. The protein is organized into four distinct domains: a C-terminal carbohydrate recognition domain, a flexible tandem-repeat neck domain, a transmembrane region and an N-terminal cytoplasmic domain involved in internalization. This gene is closely related in terms of both sequence and function to a neighboring gene, CLEC4M (Gene ID: 10332), also known as L-SIGN. The two genes differ in viral recognition and expression patterns, with this gene showing high expression on the surface of dendritic cells. Polymorphisms in the neck region are associated with protection from HIV-1 infection, while single nucleotide polymorphisms in the promoter of this gene are associated with differing resistance and susceptibility to and severity of infectious disease, including rs4804803, which is associated with SARS severity.

Molecular Characterization: mass of 40.3 kDa after removal of the signal peptide. The apparent molecular mass of His-CD209 is approximately 35-55 kDa due to glycosylation.

Tag : N-6 \times His tag

Product Info

Amount : 50 μ g / 100 μ g

Purification : The purity of the protein is greater than 85% as determined by SDS-PAGE and Coomassie blue staining.

Content : Lyophilized from sterile PBS, pH 7.4. Normally 5% - 8% trehalose is added as protectants before lyophilization.

Storage condition : Store at -20°C to -80°C for 12 months in lyophilized form. After reconstitution, if not intended for use within a month, aliquot and store at -80°C (Avoid repeated freezing and thawing). Lyophilized proteins are shipped at ambient temperature.

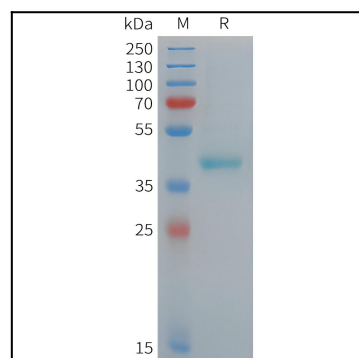


Figure 1. Human CD209 Protein, His Tag on SDS-PAGE under reducing condition.