

32-18382: Human GLP2R Protein, His Tag

Uniprot ID : O95838

Alternative Name : GLP-2 receptor; GLP-2-R; GLP-2R

Description

Description : Recombinant human GLP2R Protein with C-terminal 6 \AA —His tag

Background : This gene encodes a G protein-coupled receptor that is closely related to the glucagon receptor and binds to glucagon-like peptide-2 (GLP2). Signalling through GLP2 stimulates intestinal growth and increases villus height in the small intestine, concomitant with increased crypt cell proliferation and decreased enterocyte apoptosis.

Molecular Characterization: mass of 20.1 kDa after removal of the signal peptide.

Tag : C-6 \AA —His tag

Product Info

Amount : 50 μg / 100 μg

Purification : The purity of the protein is greater than 85% as determined by SDS-PAGE and Coomassie blue staining.

Content : Lyophilized from sterile PBS, pH 7.4. Normally 5 % - 8% trehalose is added as protectants before lyophilization.

Storage condition : Store at -20°C to -80°C for 12 months in lyophilized form. After reconstitution, if not intended for use within a month, aliquot and store at -80°C (Avoid repeated freezing and thawing). Lyophilized proteins are shipped at ambient temperature.

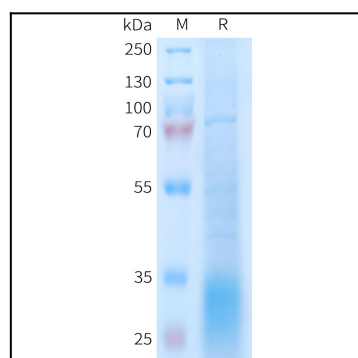


Figure 1. Human GLP2R Protein, His Tag on SDS-PAGE under reducing condition.