

32-18328: Human CFH Protein, His Tag

Uniprot ID : P08603

Alternative Name : FH;HF;HF1;HF2;HUS;FHL1;AHUS1;AMB1;ARMD4;ARMS1;CFHL3

Description

Description : Recombinant human CFH Protein with C-terminal 10 \times His tag

Background : This gene is a member of the Regulator of Complement Activation (RCA) gene cluster and encodes a protein with twenty short consensus repeat (SCR) domains. This protein is secreted into the bloodstream and has an essential role in the regulation of complement activation, restricting this innate defense mechanism to microbial infections. Mutations in this gene have been associated with hemolytic-uremic syndrome (HUS) and chronic hypocomplementemic nephropathy. Alternate transcriptional splice variants, encoding different isoforms, have been characterized.

Molecular Characterization: mass of 138.4 kDa after removal of the signal peptide. The apparent molecular mass of CFH-His is approximately 130-250 kDa due to glycosylation.

Tag : C-10 \times His Tag

Product Info

Amount : 50 μ g / 100 μ g

Purification : The purity of the protein is greater than 85% as determined by SDS-PAGE and Coomassie blue staining.

Content : Lyophilized from sterile PBS, pH 7.4. Normally 5 % - 8% trehalose is added as protectants before lyophilization.

Storage condition : Store at -20 $^{\circ}$ C to -80 $^{\circ}$ C for 12 months in lyophilized form. After reconstitution, if not intended for use within a month, aliquot and store at -80 $^{\circ}$ C (Avoid repeated freezing and thawing). Lyophilized proteins are shipped at ambient temperature.

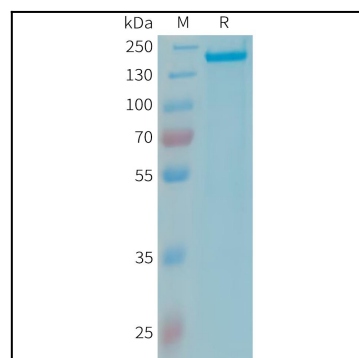


Figure 1. Human CFH Protein, His Tag on SDS-PAGE under reducing condition.