

## 32-18298: Human IL1RL2 Protein, His Tag

**Uniprot ID :** Q9HB29

**Alternative Name :** IL-1Rrp2;IL-36R;IL1R-rp2;IL1RRP2

### Description

**Description :** Recombinant Human IL1RL2 Protein with C-terminal 6 $\text{\AA}$ —His tag

**Background :** The protein encoded by this gene is a member of the interleukin 1 receptor family. An experiment with transient gene expression demonstrated that this receptor was incapable of binding to interleukin 1 alpha and interleukin 1 beta with high affinity. This gene and four other interleukin 1 receptor family genes, including interleukin 1 receptor, type I (IL1R1), interleukin 1 receptor, type II (IL1R2), interleukin 1 receptor-like 1 (IL1RL1), and interleukin 18 receptor 1 (IL18R1), form a cytokine receptor gene cluster in a region mapped to chromosome 2q12.

**Molecular Characterization:** mass of 36.8 kDa after removal of the signal peptide.

**Tag :** C-6 $\text{\AA}$ —His Tag

### Product Info

**Amount :** 50  $\mu\text{g}$  / 100  $\mu\text{g}$

**Purification :** The purity of the protein is greater than 85% as determined by SDS-PAGE and Coomassie blue staining.

**Content :** Lyophilized from sterile PBS, pH 7.4. Normally 5 % - 8% trehalose is added as protectants before lyophilization.

**Storage condition :** Store at -20 $^{\circ}\text{C}$  to -80 $^{\circ}\text{C}$  for 12 months in lyophilized form. After reconstitution, if not intended for use within a month, aliquot and store at -80 $^{\circ}\text{C}$  (Avoid repeated freezing and thawing). Lyophilized proteins are shipped at ambient temperature.

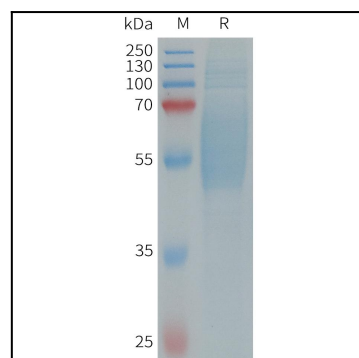


Figure 1. Human IL1RL2 Protein, His Tag on SDS-PAGE under reducing condition.