

32-18255: Human JAM-A Protein, hFc Tag

Uniprot ID : Q9Y624

Alternative Name : CD321;JAM;JAM1;JAMA;JCAM;KAT;PAM-1

Description

Description : Recombinant Human JAM-A Protein with C-terminal human Fc tag

Background : Tight junctions represent one mode of cell-to-cell adhesion in epithelial or endothelial cell sheets, forming continuous seals around cells and serving as a physical barrier to prevent solutes and water from passing freely through the paracellular space. The protein encoded by this immunoglobulin superfamily gene member is an important regulator of tight junction assembly in epithelia. In addition, the encoded protein can act as (1) a receptor for reovirus, (2) a ligand for the integrin LFA1, involved in leukocyte transmigration, and (3) a platelet receptor. Multiple 5' alternatively spliced variants, encoding the same protein, have been identified but their biological validity has not been established.

Description : Recombinant Human JAM-A Protein with C-terminal human Fc tag

Molecular Characterization : JAM-A(Ser28-Val238) hFc(Glu99-Ala330)

Molecular Weight : The protein has a predicted molecular mass of 49.1 kDa after removal of the signal peptide. The apparent molecular mass of JAM-A-hFc is approximately 55-70 kDa due to glycosylation.

Tag : C-Human Fc Tag

Product Info

Amount : 50 µg / 100 µg

Purification : The purity of the protein is greater than 95% as determined by SDS-PAGE and Coomassie blue staining.

Content : Lyophilized from sterile PBS, pH 7.4. Normally 5 % - 8% trehalose is added as protectants before lyophilization.

Storage condition : Store at -20°C to -80°C for 12 months in lyophilized form. After reconstitution, if not intended for use within a month, aliquot and store at -80°C (Avoid repeated freezing and thawing). Lyophilized proteins are shipped at ambient temperature.

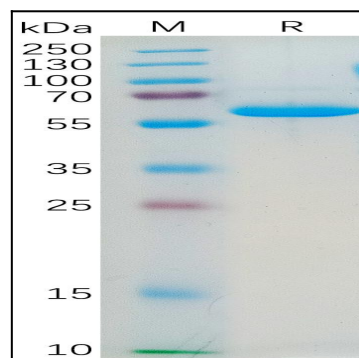


Figure 1. Human JAM-A Protein, hFc Tag on SDS-PAGE under reducing condition.

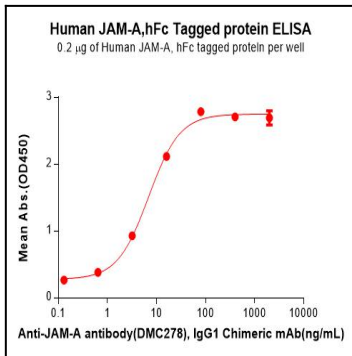


Figure 2. ELISA plate pre-coated by 2 µg/mL (100 µL/well) Human JAM-A Protein, hFc Tag can bind Anti-JAM-A antibody(DMC278), IgG1 Chimeric mAb in a linear range of 3.20-80 ng/mL.