

32-18240: Human CD36 Protein, hFc Tag

Uniprot ID : P16671

Alternative Name : BDPLT10;CHDS7;FAT;GP3B;GP4;GPIV;PASIV;SCARB3

Description

Description : Recombinant Human CD36 Protein with C-terminal human Fc tag

Background : The protein encoded by this gene is the fourth major glycoprotein of the platelet surface and serves as a receptor for thrombospondin in platelets and various cell lines. Since thrombospondins are widely distributed proteins involved in a variety of adhesive processes, this protein may have important functions as a cell adhesion molecule. It binds to collagen, thrombospondin, anionic phospholipids and oxidized LDL. It directly mediates cytoadherence of Plasmodium falciparum parasitized erythrocytes and it binds long chain fatty acids and may function in the transport and/or as a regulator of fatty acid transport. Mutations in this gene cause platelet glycoprotein deficiency. Multiple alternatively spliced transcript variants have been found for this gene.

Molecular Characterization: mass of 72.8 kDa after removal of the signal peptide. The apparent molecular mass of CD36-hFc is approximately 100-130 kDa due to glycosylation.

Tag : C-Human Fc Tag

Product Info

Amount : 50 µg / 100 µg

Purification : The purity of the protein is greater than 95% as determined by SDS-PAGE and Coomassie blue staining.

Content : Lyophilized from sterile PBS, pH 7.4. Normally 5 % - 8% trehalose is added as protectants before lyophilization.

Storage condition : Store at -20°C to -80°C for 12 months in lyophilized form. After reconstitution, if not intended for use within a month, aliquot and store at -80°C (Avoid repeated freezing and thawing). Lyophilized proteins are shipped at ambient temperature.

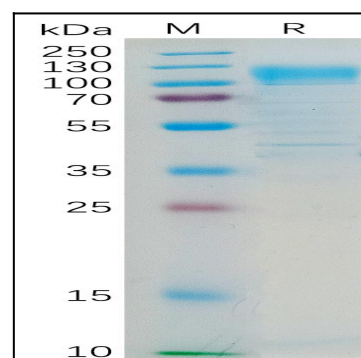


Figure 1. Human CD36 Protein, hFc Tag on SDS-PAGE under reducing condition.

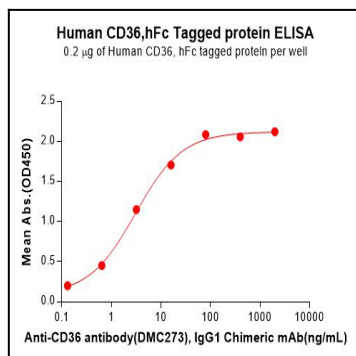


Figure 2. ELISA plate pre-coated by 2 $\hat{1}/4$ g/mL (100 $\hat{1}/4$ L/well) Human CD36 Protein, hFc Tag can bind Anti-CD36 antibody(DMC273), IgG1 Chimeric mAb in a linear range of 0.64-16 ng/mL.