

32-18238: Human AFP Protein, hFc Tag

Uniprot ID : P02771
Alternative Name : AFPD;FETA;HPAFP

Description

Description : Recombinant human AFP protein with C-terminal human Fc tag

Background : This gene encodes alpha-fetoprotein, a major plasma protein produced by the yolk sac and the liver during fetal life. Alpha-fetoprotein expression in adults is often associated with hepatocarcinoma and with teratoma, and has prognostic value for managing advanced gastric cancer. However, hereditary persistence of alpha-fetoprotein may also be found in individuals with no obvious pathology. The protein is thought to be the fetal counterpart of serum albumin, and the alpha-fetoprotein and albumin genes are present in tandem in the same transcriptional orientation on chromosome 4. Alpha-fetoprotein is found in monomeric as well as dimeric and trimeric forms, and binds copper, nickel, fatty acids and bilirubin. The level of alpha-fetoprotein in amniotic fluid is used to measure renal loss of protein to screen for spina bifida and anencephaly.

Molecular Characterization: mass of 92.6 kDa after removal of the signal peptide. The apparent molecular mass of AFP-hFc is approximately 100-130 kDa due to glycosylation.

Tag : C-Human Fc Tag

Product Info

Amount : 50 µg / 100 µg

Purification : The purity of the protein is greater than 90% as determined by SDS-PAGE and Coomassie blue staining.

Content : Lyophilized from sterile PBS, pH 7.4. Normally 5 % - 8% trehalose is added as protectants before lyophilization.

Storage condition : Store at -20°C to -80°C for 12 months in lyophilized form. After reconstitution, if not intended for use within a month, aliquot and store at -80°C (Avoid repeated freezing and thawing). Lyophilized proteins are shipped at ambient temperature.

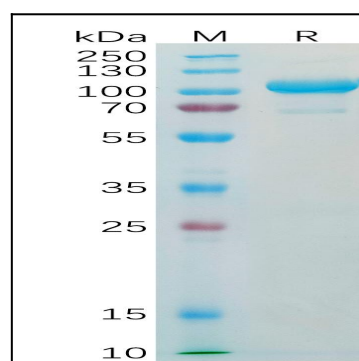


Figure 1. Human AFP Protein, hFc Tag on SDS-PAGE under reducing condition.

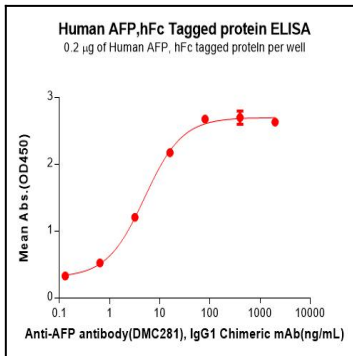


Figure 2. ELISA plate pre-coated by 2 $\hat{1}/4$ g/mL (100 $\hat{1}/4$ L/well) Human AFP Protein, hFc Tag can bind Anti-AFP antibody(DMC281), IgG1 Chimeric mAb in a linear range of 0.64-16 ng/mL.