

30-2919: Anti-Hu CD245 PE Mab (DY12)

Clonality :	Monoclonal
Clone Name :	DY12
Application :	FACS
Reactivity :	Human
Conjugate :	PE
Alternative Name :	p220/240, DY12, DY35
Isotype :	Mouse IgG1 kappa
Immunogen Information :	human NK-type YT2C2 cells

Description

Specificity:The mouse monoclonal antibody DY12 recognizes an extracellular epitope of CD245, a transmembrane protein expressed mainly by peripheral blood lymphocytes, NK cells, monocytes, granulocytes and platelets.

CD245 is a 220-250 kDa transmembrane protein of unknown structure. It is expressed at lower level on resting blood lymphocytes, granulocytes, platelets, and thymocytes, and at high level on monocytes and on IL-2-dependent T cell lines. It is also expressed on Ewing sarcoma and osteosarcoma cell lines. CD245 seems to act as a costimulation molecule of T and NK cells.

Product Info

Amount :	100 tests
Purification :	Purified antibody is conjugated with R-phycoerythrin (PE) under optimum conditions. Unconjugated antibody and free fluorochrome are removed by size-exclusion chromatography.
Content :	Storage Buffer: Stabilizing phosphate buffered saline (PBS), pH 7.4, 15 mM sodium azide
Storage condition :	Store at 2-8°C. Protect from prolonged exposure to light. Do not freeze.

Application Note

Flow cytometry: The reagent is designed for analysis of human blood cells using 10 µl reagent / 100 µl of whole blood or 10⁶ cells in a suspension. The content of a vial (1 ml) is sufficient for 100 tests.

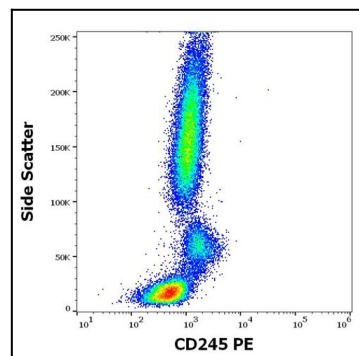


Figure 1: Flow cytometry surface staining pattern of human peripheral whole blood stained using anti-human CD245 (DY12) PE antibody (10 µl reagent / 100 µl of peripheral whole blood).

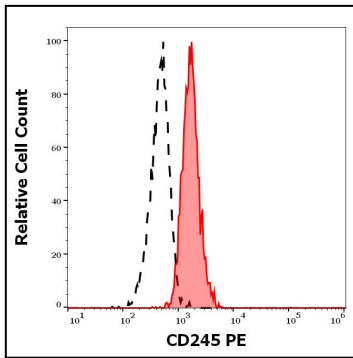


Figure 2: Separation of human monocytes (red-filled) from lymphocytes (black-dashed) in flow cytometry analysis (surface staining) of human peripheral whole blood stained using anti-human CD245 (DY12) PE antibody (10 μ l reagent / 100 μ l of peripheral whole blood).