

30-2912: Anti-HLA-E APC Mab (3D12)

Clonality :	Monoclonal
Clone Name :	3D12
Application :	FACS
Reactivity :	Human
Conjugate :	APC
Gene :	HLA-E
Gene ID :	3133
Uniprot ID :	P13747
Alternative Name :	HLA class I histocompatibility antigen, alpha chain E, MHC class I antigen E
Isotype :	Mouse IgG1
Immunogen Information :	Recombinant human HLA-E

Description

Specificity: The mouse monoclonal antibody 3D12 (also known as 3D12HLA-E) recognizes native extracellular part of HLA-E, an ubiquitously expressed non-classical MHC class I molecule, as well as free HLA-E.

HLA-E (human leukocyte antigen E) is a non-classical MHC I antigen, which is important for dialogue with NK cells and their regulation through interaction with CD94/NKG2 receptor. Like other MHC I molecules, transmembrane HLA-E molecule (45 kDa) associates with beta2 microglobulin. Unlike HLA-G, expression of HLA-E molecules is not so restricted, but it has been detected at least at mRNA level in virtually all cells and tissues examined. In peripheral blood, HLA-E protein is expressed at least in all mononuclear cells, but in different quantity (B cells and monocytes more than T cells and NK cells).

Product Info

Amount :	0.1 mg
Purification :	Purified antibody is conjugated with activated allophycocyanin (APC) under optimum conditions and unconjugated antibody and free fluorochrome are removed by size-exclusion chromatography.
Content :	Concentration: 0.1 mg/ml Storage Buffer: Stabilizing phosphate buffered saline (PBS), pH 7.4, 15 mM sodium azide
Storage condition :	Store at 2-8°C. Protect from prolonged exposure to light. Do not freeze.

Application Note

Flow cytometry: Recommended dilution: 1-4 µg/ml.

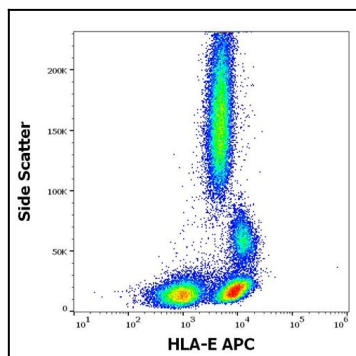


Figure 1: Flow cytometry surface staining pattern of human peripheral whole blood stained using anti-HLA-E (3D12) APC antibody (10 μ l reagent / 100 μ l of peripheral whole blood).

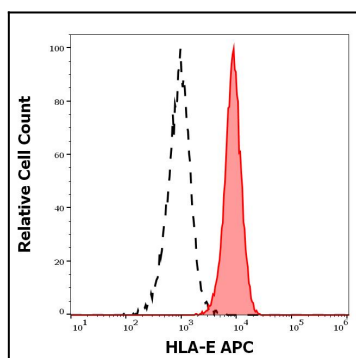


Figure 2: Separation of human lymphocytes (red-filled) from CD45 negative blood debris (black-dashed) in flow cytometry analysis (surface staining) of human peripheral whole blood stained using anti-HLA-E (3D12) APC antibody (10 μ l reagent / 100 μ l of peripheral whole blood).