

30-2907: Anti-Hu CD49c APC Mab (ASC-1)

Clonality :	Monoclonal
Clone Name :	ASC-1
Application :	FACS
Reactivity :	Human
Conjugate :	APC
Gene :	ITGA3
Gene ID :	3675
Uniprot ID :	P26006
Alternative Name :	ITGA3, VLA-3 alpha, FRP-2, FRP2, GAPB3
Isotype :	Mouse IgG1 kappa
Immunogen Information :	Human SSC-9 cell line (squamous cell carcinoma)

Description

Specificity: The mouse monoclonal antibody ASC-1 recognizes an extracellular epitope of CD49c (integrin alpha 3), a transmembrane glycoprotein composed of disulfide linked 125 kDa and 30 kDa chains, and expressed on adherent cell lines and to a lesser extent on T and B cells and monocytes.

CD49c / Integrin alpha 3 is a type I transmembrane glycoprotein proteolytically cleaved into two disulfide linked chains. It noncovalently associates with CD29 (integrin beta 1) to form the VLA-3 complex, an adhesion receptor for extracellular matrix components (fibronectin, laminin 1, laminin 5, entactin, and collagen). It is expressed on adherent cells, mainly on fibroblasts, epithelial cells and endothelial cells.

Product Info

Amount :	100 tests
Purification :	Purified antibody is conjugated with activated allophycocyanin (APC) under optimum conditions and unconjugated antibody and free fluorochrome are removed by size-exclusion chromatography.
Content :	Storage Buffer: Stabilizing phosphate buffered saline (PBS), pH 7.4, 15 mM sodium azide
Storage condition :	Store at 2-8°C. Protect from prolonged exposure to light. Do not freeze.

Application Note

Flow cytometry: The reagent is designed for analysis of human blood cells using 10 µl reagent / 100 µl of whole blood or 10⁶ cells in a suspension. The content of a vial (1 ml) is sufficient for 100 tests.

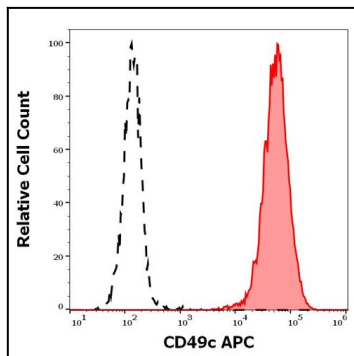


Figure 1: Separation of HeLa cells stained using anti-human CD49c (ASC-1) APC antibody (10 μ l reagent per million cells in 100 μ l of cell suspension, red-filled) from HeLa cells stained using mouse IgG1 isotype control (MOPC-21) APC antibody (concentration in sample 1.67 μ g/ml, same as CD49c APC concentration, black-dashed) in flow cytometry analysis (surface staining).