

30-2894: Anti-CD325 PE Mab(8C11)

| | |
|--------------------------------|------------------------------------|
| Clonality : | Monoclonal |
| Clone Name : | 8C11 |
| Application : | FACS |
| Reactivity : | Human |
| Conjugate : | PE |
| Gene ID : | 1000 |
| Uniprot ID : | P19022 |
| Alternative Name : | N-Cadherin, cadherin 2, CDHM, CDH2 |
| Isotype : | Mouse IgG1 |
| Immunogen Information : | Purified human IgE. |

Description

Specificity: The mouse monoclonal antibody 4H10 reacts with human IgE; it recognizes an epitope different from the ones recognized by BE5 and 4G7 antibodies to IgE. The epitope is located within the amino acids 267-279 (TWLEDGQVMDVDL).

Immunoglobulin E (IgE) is a 180 kDa soluble protein serving as an antigen-specific unit of mast cell effector mechanisms. IgE has the lowest serum concentration of all immunoglobulins (approximately 0.5 mg/l) in healthy individuals, but upon allergen challenge its concentration in blood increases dramatically. Although biological survival of free IgE is very short ($T_{1/2} = 2$ days), it is stabilized after binding to its high affinity receptor. Unlike IgM- IgG- and IgA-committed B cells, IgE-switched B cells do not undergo clonal expansion.

Product Info

| | |
|----------------------------|---|
| Amount : | 0.1 mg |
| Purification : | Purified antibody is conjugated with R-phycoerythrin (PE) under optimum conditions. Unconjugated antibody and free fluorochrome are removed by size-exclusion chromatography. |
| Content : | Formulation : Stabilizing phosphate buffered saline (PBS), pH 7.4, 15 mM sodium azide |
| Storage condition : | Store at 2-8°C. Protect from prolonged exposure to light. Do not freeze. |

Application Note

Flow cytometry: Recommended dilution: 1-5 $\mu\text{g/ml}$.

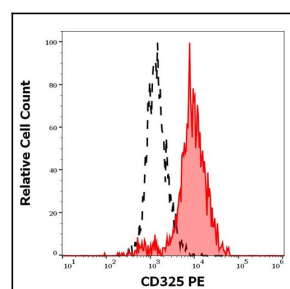


Figure 1: Separation of HeLa cells stained using anti-human CD325 (8C11) PE antibody (10 μl reagent per million cells in 100 μl of cell suspension, red-filled) from HeLa cells stained using mouse IgG1 isotype control (MOPC-21) PE antibody (concentration in sample 5 $\mu\text{g/ml}$, same as CD325 APC concentration, black-dashed) in flow cytometry analysis (surface staining).