

12-9397: Anti-Mesothelin VHH-human IgG1 Fc

Clonality :	Monoclonal
Application :	ELISA,FACS
Reactivity :	Human
Uniprot ID :	Q13421
Alternative Name :	LB1902,MSLN, MPF
Isotype :	IgG1

Description

Anti-Mesothelin VHH-human IgG1 Fc

Product Info

Amount :	50 µg / 100 µg
Content :	Buffer: Lyophilized from sterile PBS, pH 7.4. Normally 5 % - 8% trehalose is added as protectants before lyophilization.
Storage condition :	Store at -20°C to -80°C for 12 months in lyophilized form. After reconstitution, if not intended for use within a month, aliquot and store at -80°C (Avoid repeated freezing and thawing).Lyophilized antibodies are shipped at ambient temperature.

Application Note

ELISA 1:5000-10000, Flow Cyt 1:100

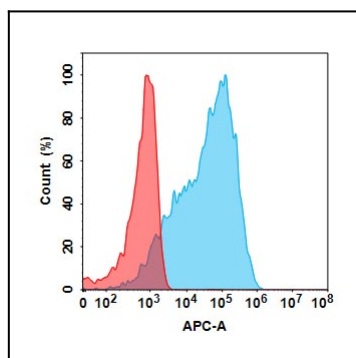


Figure 1. Flow cytometry analysis with 1¹/₄g/mL Anti-Mesothelin VHH-human IgG1 Fc on Expi293 cells transfected with Human Mesothelin protein (Blue histogram) or Expi293 transfected with irrelevant protein (Red histogram).

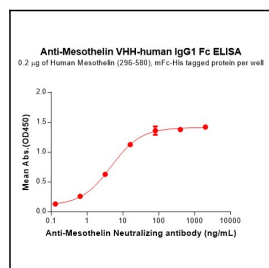


Figure 2. ELISA plate pre-coated by 2¹/₄g/mL (100¹/₄L/well) Human Mesothelin (296-580) Protein, mFc-His Tag can bind Anti-Mesothelin VHH-human IgG1 Fc in a linear range of 0.64-16 ng/mL.