

## 12-9393: Anti-KLRG1(ulviprubart biosimilar) mAb

<b>Clonality :</b>	Monoclonal
<b>Application :</b>	FACS
<b>Reactivity :</b>	Human
<b>Uniprot ID :</b>	Q96E93
<b>Alternative Name :</b>	ABC-008,ABC008,2F1, CLEC15A, MAFA, MAFA-2F1, MAFA-L, MAFA-LIKE
<b>Isotype :</b>	IgG1

### Description

Anti-KLRG1(ulviprubart biosimilar) mAb

### Product Info

<b>Amount :</b>	50 µg / 100 µg
<b>Content :</b>	Buffer: Lyophilized from sterile PBS, pH 7.4. Normally 5 % - 8% trehalose is added as protectants before lyophilization.
<b>Storage condition :</b>	Store at -20°C to -80°C for 12 months in lyophilized form. After reconstitution, if not intended for use within a month, aliquot and store at -80°C (Avoid repeated freezing and thawing).Lyophilized antibodies are shipped at ambient temperature.

### Application Note

Flow Cyt 1:100

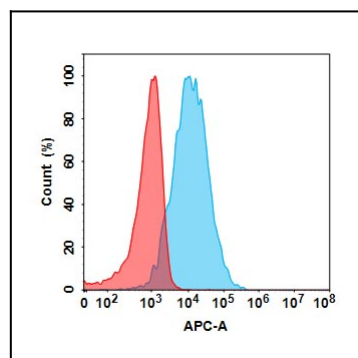


Figure 1. Flow cytometry analysis with 1<sup>1</sup>/<sub>4</sub>g/mL Anti-KLRG1(ulviprubart biosimilar) mAb on Expi293 cells transfected with Human KLRG1 protein (Blue histogram) or Expi293 transfected with irrelevant protein (Red histogram).