

30-2877: Anti-Human CD303 Mab (Clone:15E3)

Clonality :	Monoclonal
Clone Name :	15E3
Application :	IHC-Fr,ICC,ELISA,FACS
Reactivity :	Human
Gene :	CLEC4C
Gene ID :	170482
Uniprot ID :	Q8WTT0
Format :	Purified
Alternative Name :	BDCA2, CLEC4C, DLEC, HECL, CLECSF7, CLECSF11, PRO34150
Isotype :	Mouse IgG1 kappa
Immunogen Information :	CD303 ectodomain fused with human IgG Fc domain

Description

Specificity : The mouse monoclonal antibody 15E3 recognizes an extracellular epitope of human CD303, a transmembrane glycoprotein expressed on plasmacytoid dendritic cells.

CD303 is an approximately 38 kDa type II transmembrane glycoprotein with an extracellular C-type lectin domain. It is a specific marker of plasmacytoid dendritic cells, and plays roles in capturing of pathogen-related oligosaccharide-containing antigens by them, and in their presentation to T cells. CD303 also mediates a potent inhibition of interferon alpha/beta production in plasmacytoid dendritic cells, thus it represents a potential target for lupus erythematosus therapy.

Product Info

Amount :	0.1 mg
Purification :	Purified by protein-A affinity chromatography.
Content :	Formulation: Phosphate buffered saline (PBS), pH 7.4, 15 mM sodium azide Concentration : 1 mg/ml
Storage condition :	Store at 2-8°C. Do not freeze.

Application Note

Flow cytometry: Recommended dilution: 1-5 µg/ml.

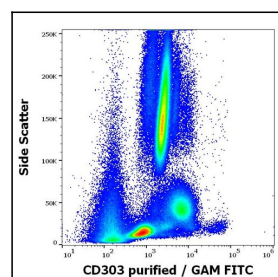


Figure 1: Flow cytometry surface staining pattern of human peripheral whole blood stained using anti-human CD303 (15E3) purified antibody (concentration in sample 3 1/4g/ml, GAM FITC).

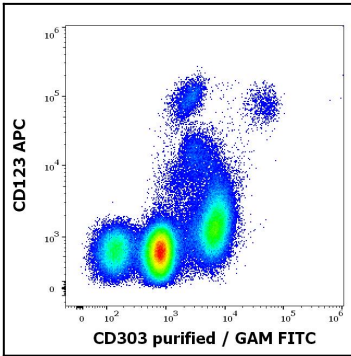


Figure 2: Flow cytometry multicolor surface staining of human peripheral blood mononuclear cells stained using CD303 (15E3) purified antibody (concentration in sample 3 μ g/ml, GAM FITC) and anti-human CD123 (6H6) APC antibody (10 μ g/ml reagent / 100 μ l of peripheral whole blood).

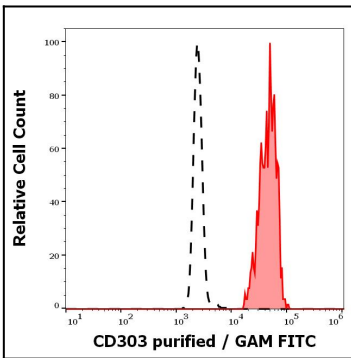


Figure 3: Separation of human CD303 positive CD123 positive plasmacytoid dendritic cells (red-filled) from neutrophil granulocytes (black-dashed) in flow cytometry analysis (surface staining) of human peripheral whole blood stained using anti-human CD303 (15E3) purified antibody (concentration in sample 3 μ g/ml, GAM FITC).