

30-2868: Anti-Human SIGLEC10 Mab (Clone: 5G6)

Clonality :	Monoclonal
Clone Name :	5G6
Application :	IP,ELISA,IHC
Reactivity :	Human
Conjugate :	Unconjugated
Gene :	SIGLEC10
Gene ID :	89790
Uniprot ID :	Q96LC7
Format :	Purified
Alternative Name :	PRO940, SGL2, sialic acid binding Ig like lectin 10
Isotype :	Mouse IgG1
Immunogen Information :	SIGLEC10 extracellular domain fused with human IgG1 Fc fragment

Description

Specificity : The mouse monoclonal antibody 5G6 recognizes an extracellular epitope of human SIGLEC10, a sialic acid-binding lectin expressed on subsets of human leucocytes.

SIGLEC10 is a CD33-related receptor of sialoglycans, expressed on eosinophils, monocytes, a subpopulation of NK cells, and at lower level on B cells. Its murine ortholog is Siglec G. SIGLEC10 seems to act as an immunomodulatory receptor, which binds to VAP-1, a glycoprotein expressed on endothelium under inflammatory conditions. Another ligand of SIGLEC10 is CD24, a marker of poorer prognosis in carcinomas.

Product Info

Amount :	0.1 mg
Purification :	Purified by protein-A affinity chromatography.
Content :	1 mg/ml Phosphate buffered saline (PBS), pH 7.4, 15 mM sodium azide
Storage condition :	Store at 2-8°C. Do not freeze.

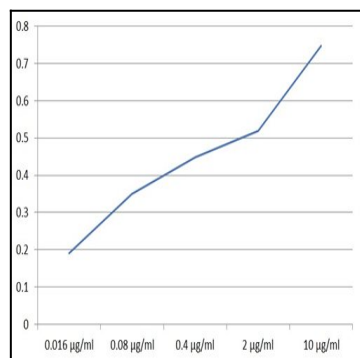


Figure 1: ELISA analysis of human SIGLEC 10-Fc fusion protein (5 $\hat{1}$ /₄g/ml) using mouse monoclonal antibody 5G6 (0.016 - 10 $\hat{1}$ /₄g/ml).