

## JOT0076-1: Anti-mCherry VHH antibody

**Clonality :** Monoclonal  
**Application :** ELISA, WB  
**Uniprot ID :** X5DSL3  
**Isotype :** Camelid VHH

### Description

Alpaca derived anti-mCherry VHH single domain antibody (molecular weight: 14.7 kDa) with a 6\*His tag at its C-terminal, expressed in E. coli under conditions free from animal derived components.

mCherry is a monomeric red fluorescent protein (mRFP) belonging to the mFruits family which is brighter and more photostable compared to the first-generation mRFP1, making them ideal for fluorescence microscopy. mCherry has an excitation maximum at 587 nm and an emission maximum at 610 nm. mCherry protein was derived from DsRed, a red fluorescent protein from the coral *Discosoma* (disc anemone). mCherry is 236 amino acids (aa) in length with a theoretical molecular weight of 28 kDa and has a crystal structure with the chromophore forming a central helix shielded within an eleven-stranded beta-barrel.

This is a product from [Jotbody](#), Hong Kong. This antibody is made available worldwide by ABEOMICS Inc.

### Product Info

**Amount :** 100 µg / 50 µg  
**Purification :** Affinity chromatography purified via Ni-charged resin.  
Purity: > 95% as determined by SDS-PAGE  
**Content :** 1 mg/mL by Nanodrop  
Buffer : 25 mM TAPS pH8.5, 500 mM NaCl, 5 mM EDTA, 0.1 % Proclin 300  
**Storage condition :** 4°C; Do not freeze.

### Application Note

Positive controls : Positive ELISA detected in: recombinant fluorescent protein mCherry Positive WB detected in: mCherry-expressing 293T cells Positive IF detected in: mCherry-expressing PLC/PRF/5 cells  
Recommended dilutions :ELISA 1:2000-1:10000 WB 1:1000-1:5000 IF 1:500-1:2000

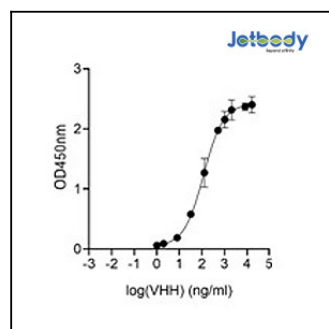


Figure 1: Indirect ELISA showing anti-mCherry VHH antibody (JOT0076-1) binding to purified mCherry protein. Plates were coated with 200ng/well purified protein and binding of JOT0076-1 assessed in serial dilution from 1ng/ml primary antibody in triplicate.

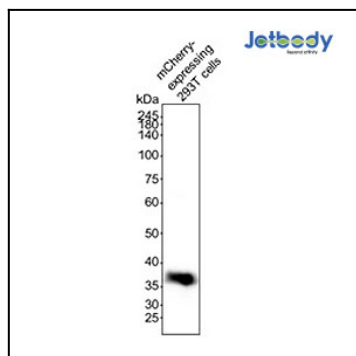


Figure 2: mCherry-expressing 293T cell lysates were subjected to SDS- PAGE followed by western blot with anti-mCherry VHH antibody (JOT0076-1) at dilution of 1:3000 incubated at room temperature for 1.5 hours.

Figure 3: Immunofluorescence analysis of paraformaldehyde-fixed mCherry- expressing PLC/PRF/5 cells stained with anti-mCherry VHH antibody (JOT0076-1) at 1:500 dilution followed by MonoRab Rabbit Anti- Camelid VHH Cocktail [iFluor 488] at 1:1000 dilution, showing cytoplasmic staining. The nuclear stain is DAPI (blue). The negative control is non-expressing 293T cells.