

## 21-1021: Recombinant TLR9 Protein with human Fc Tag

**Application :** ELISA,WB

### Description

Source: **CHO-K1**. TLR2 belongs to the Toll-like receptor (TLR) family that plays a fundamental role in pathogen recognition and activation of innate immunity. TLRs are highly conserved from Drosophila to humans and share structural and functional similarities. They recognize pathogen-associated molecular patterns (PAMPs) which are expressed on infectious agents, and mediate the production of cytokines necessary for the development of effective immunity. The various TLRs exhibit different patterns of expression. TLR2 is expressed most abundantly in peripheral blood leukocytes, and mediates host response to Gram-positive bacteria and yeast via stimulation of NF-kappaB.

TLR9 Human Recombinant produced in CHO-K1 cells is a single, glycosylated polypeptide chain containing 792 amino acids (26-818aa) and having a molecular mass of 87kDa (Migrates at 87-100 kDa on SDS-PAGE under reducing conditions).TLR9 is expressed with human Fc tag (27 kDa) at C-Terminus and purified by protein G column. Total size of the protein is approximately 115 kDa.

### Product Info

<b>Amount :</b>	25 µg
<b>Purification :</b>	>90% by SDS-PAGE.
<b>Content :</b>	Protein is suspended in sterile PBS, pH 7.4
<b>Storage condition :</b>	Recombinant TLR9-Fc Protein is shipped on ice packs. Upon arrival, Store at -20°C. Do not freeze-thaw multiple times.

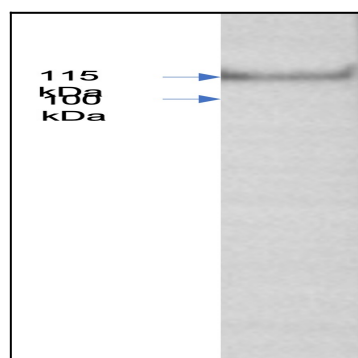


Figure 1: Western blot of recombinant hTLR9 hFc tag protein. Anti-TLR9 antibody was used, Abeomics Cat# 10-3003