

21-1019: Recombinant TLR2 Protein with human Fc Tag

Application : ELISA, WB

Description

Source: **CHO-K1**. TLR2 belongs to the Toll-like receptor (TLR) family that plays a fundamental role in pathogen recognition and activation of innate immunity. TLRs are highly conserved from *Drosophila* to humans and share structural and functional similarities. They recognize pathogen-associated molecular patterns (PAMPs) which are expressed on infectious agents, and mediate the production of cytokines necessary for the development of effective immunity. The various TLRs exhibit different patterns of expression. TLR2 is expressed most abundantly in peripheral blood leukocytes, and mediates host response to Gram-positive bacteria and yeast via stimulation of NF-kappaB.

TLR2 Human Recombinant produced in CHO-K1 cells is a single, glycosylated polypeptide chain containing 578 amino acids (19-588 aa) and having a molecular mass of 65.5kDa (Migrates at 50-70kDa on SDS-PAGE under reducing conditions). TLR2 is expressed with human Fc tag (27 kDa) at C-Terminus and purified by protein G column. Total size of the protein is approximately 100 kDa.

Product Info

Amount :	25 µg
Purification :	>90% by SDS-PAGE.
Content :	Protein is suspended in sterile PBS, pH 7.4
Storage condition :	Recombinant TLR2-Fc Protein is shipped on ice packs. Upon arrival, Store at -20°C. Do not freeze-thaw multiple times.

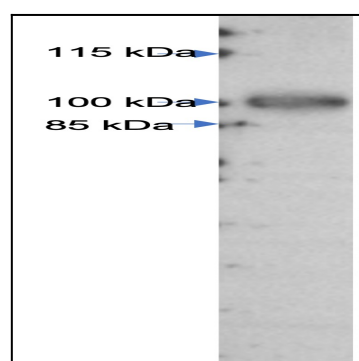


Figure 1: Human TLR2-hFc, Western blot was done using Anti-TLR2 antibody Abeomics Cat# 10-3026