

## 30-2833: Anti-Hu CD118 (Clone: 12D3) Purified

<b>Clonality :</b>	Monoclonal
<b>Clone Name :</b>	12D3
<b>Application :</b>	ELISA,FACS,WB
<b>Reactivity :</b>	Human
<b>Gene :</b>	LIFR
<b>Gene ID :</b>	3977
<b>Uniprot ID :</b>	P42702
<b>Format :</b>	Purified
<b>Alternative Name :</b>	LIF receptor subunit alpha LIFR alpha, SWS, SJS2, STWSm, gp190
<b>Isotype :</b>	Mouse IgG1 kappa
<b>Immunogen Information :</b>	human recombinant soluble CD118-Fc

### Description

CD118 (LIFR alpha) is a type I transmembrane glycoprotein of the cytokine receptor family, which associates noncovalently with CD130 to form the functional high affinity LIF receptor, which also acts as an oncostatin M receptor. CD118 alone binds LIF with low affinity. A secreted form of CD118 results from alternative splicing, and may have inhibitory effect, as it also binds LIF, although with low affinity. CD118 is not expressed on lymphocytes, but it is widely expressed outside the immune system. Soluble CD118 level rises during pregnancy, in parallel with a drop in circulating LIF levels.

**Specificity :** The mouse monoclonal antibody 12D3 recognizes an extracellular epitope of CD118, a transmembrane glycoprotein, which associates with CD130 to form the functional high affinity LIF receptor.

### Product Info

<b>Amount :</b>	0.1 mg
<b>Purification :</b>	Purified by protein-A affinity chromatography.
<b>Content :</b>	Concentration: 1 mg/ml Storage Buffer: Phosphate buffered saline (PBS), pH 7.4
<b>Storage condition :</b>	Store at 2-8°C. Do not freeze.

### Application Note

Flow cytometry: Recommended dilution: 2-5 µg/ml.

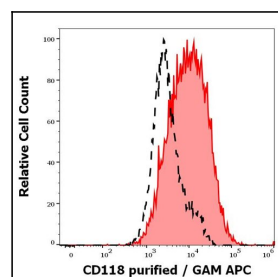


Figure 1: Separation of JAR cells stained using anti-human CD118 (12D3) purified antibody (GAM APC, red-filled) from JAR cells unstained by primary antibody (GAM APC, black-dashed) in flow cytometry analysis (surface staining) of JAR cell suspension.