

30-2720: Anti-PPM1D Purified

Clonality :	Monoclonal
Clone Name :	7E11/C5
Application :	WB
Reactivity :	Mouse
Gene :	PPM1D
Gene ID :	8493
Uniprot ID :	O15297
Format :	Purified
Alternative Name :	protein phosphatase, Mg ²⁺ /Mn ²⁺ dependent 1D WIP1, Protein phosphatase 1D, JDVS, WIP1, IDDGP
Immunogen Information :	Purified human PPM1D

Description

PPM1D is a Mg²⁺/Mn²⁺ dependent protein phosphatase 1D with inducible expression in response to various types of environmental stress. This expression is p53-dependent, and subsequently PPM1D negatively regulates the p53-mediated transcription, thus it suppresses the apoptosis. PPM1D contributes to development of carcinomas, and seems to be a promising therapeutic target. Amplification of PPM1D is associated with breast cancer.

Specificity : The mouse monoclonal antibody 7E11/C5 recognizes an epitope within the sequence FTNEDELYNLLTDSP of PPM1D, a protein phosphatase, which contributes to development of some carcinomas.

Product Info

Amount :	0.1 mg
Purification :	Purified by protein-A affinity chromatography.
Content :	Concentration: 1 mg/ml Storage Buffer: Phosphate buffered saline (PBS), pH 7.4, 15 mM sodium azide
Storage condition :	Store at 2-8°C. Do not freeze.

Application Note

Western blotting: Recommended dilution: 1-2 μ g/ml.

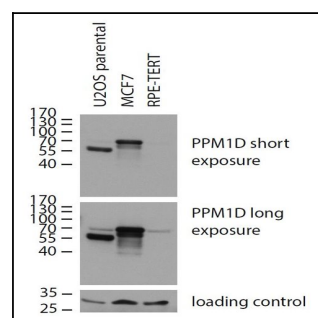


Figure 1: Western blotting analysis of human PPM1D using mouse monoclonal antibody 7E11/C5 on lysates of U2OS parental cells, expressing both natural (70 kDa, low expression) and C-terminally truncated version (55 kDa, high expression) of PPM1D, and on lysates of MCF7 cells (high PPM1D expression) and RPE cells (low PPM1D expression); reducing conditions.