

30-2719: Anti-Hu SIGLEC8 PE

Clonality :	Monoclonal
Clone Name :	7C9
Application :	FACS
Reactivity :	Human
Conjugate :	PE
Gene :	SIGLEC8
Gene ID :	27181
Uniprot ID :	Q9NYZ4
Alternative Name :	sialic acid binding Ig like lectin 8 SAF2
Immunogen Information :	Extracellular domain of human SIGLEC8 fused with Fc fragment of human IgG1

Description

SIGLEC8 is a sialic acid binding lectin similar to CD33. In its cytoplasmic domain it contains an immunoreceptor tyrosine-based inhibitory motif (ITIM), and a motive similar to a binding site for SLAM-associated protein. SIGLEC8 is expressed e.g. in lymph nodes and spleen. It is an eosinophil marker, although it can be found also on the surface of mast cells. Crosslinking of SIGLEC8 leads to apoptosis. Soluble form of SIGLEC8 can be found in human serum, especially in case of eosinophil-associated diseases.

Specificity : The mouse monoclonal antibody 7C9 recognizes an extracellular epitope of SIGLEC8, an eosinophil marker, expressed e.g. in lymph nodes and spleen.

Product Info

Amount :	100 Tests
Purification :	Purified antibody is conjugated with R-phycoerythrin (PE) under optimum conditions. Unconjugated antibody and free fluorochrome are removed by size-exclusion chromatography.
Content :	Concentration: 1 mg/ml Storage Buffer: Phosphate buffered saline (PBS), pH 7.4, 15 mM sodium azide
Storage condition :	Store at 2-8°C. Protect from prolonged exposure to light. Do not freeze.

Application Note

Flow cytometry: The reagent is designed for analysis of human blood cells using 10 μ l reagent / 100 μ l of whole blood or 10^6 cells in a suspension. The content of a vial (1 ml) is sufficient for 100 tests.

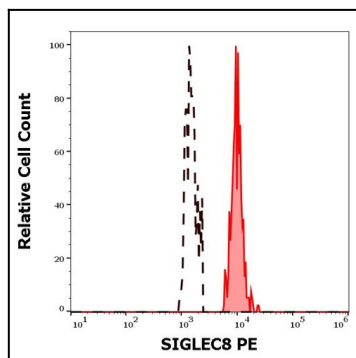


Figure 1: Separation of human SIGLEC8 positive eosinophil granulocytes (red-filled) from eosinophil granulocytes (black-dashed) stained using mouse IgG1 isotype control (MOPC-21) PE antibody (black-dashed) in flow cytometry analysis (surface staining) of human peripheral whole blood stained using anti-human SIGLEC8 (7C9) APC antibody