

30-2717: Anti-Hu TCR gamma/delta (Clone: 11F2) PE Conjugated

Clonality :	Monoclonal
Clone Name :	11F2
Application :	FACS
Reactivity :	Human
Conjugate :	PE
Alternative Name :	TCRG/D
Immunogen Information :	Purified CD3 antigen complex

Description

The antigen-specific T cell receptor (TCR) is composed of either alpha and beta subunit, or gamma and delta subunit. Majority of T cells present in the blood, lymph and secondary lymphoid organs express TCR alpha/beta heterodimers, whereas the T cells expressing TCR gamma/delta heterodimers are localized mainly in epithelial tissues and at the sites of infection. The subunits of TCR heterodimers are covalently bonded and in the endoplasmic reticulum they associate with CD3 subunits to form functional TCR-CD3 complex. Lack of expression of any of the chains is sufficient to stop cell surface expression.

Specificity :The mouse monoclonal antibody 11F2 recognizes an extracellular epitope in all molecular forms of the TCR gamma/delta.

Product Info

Amount :	100 Tests
Purification :	Purified antibody is conjugated with R-phycoerythrin (PE) under optimum conditions. Unconjugated antibody and free fluorochrome are removed by size-exclusion chromatography.
Content :	Concentration: 1 mg/ml Storage Buffer: Phosphate buffered saline (PBS), pH 7.4, 15 mM sodium azide
Storage condition :	Store at 2-8°C. Protect from prolonged exposure to light. Do not freeze.

Application Note

Flow cytometry: The reagent is designed for analysis of human blood cells using 10 µl reagent / 100 µl of whole blood or 10⁶ cells in a suspension. The content of a vial (1 ml) is sufficient for 100 tests.

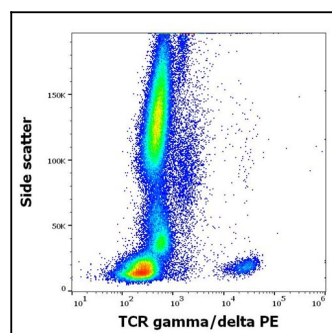


Figure 1: Flow cytometry surface staining of human peripheral whole blood stained using anti-h TCR gamma/delta PE antibody.