

30-2715: Anti-Hu TCR Vdelta2 Purified

Clonality :	Monoclonal
Clone Name :	B6
Application :	FACS
Reactivity :	Human
Format :	Purified
Alternative Name :	TCRVD2
Immunogen Information :	human recombinant TCR Vdelta2

Description

TCR Vdelta2 is a variant of TCR delta chain, that is present on a major subset of human gamma/delta T cells. TCR Vgamma9/Vdelta2 (or Vgamma2/Vdelta2) T cells are able to recognize and kill various tumor cells, as this receptor heterodimer binds to certain phosphoantigens, expressed by tumors. They can recognize these antigens in an MHC-unrestricted manner. Similarly to NK cells, Vdelta2 T cells express MHC I receptors and killer Ig-like receptors, that are involved in tumor recognition and cytolysis. The potentially cytotoxic subset of them is identified by cell surface expression of polysialyated CD56.

Specificity :The mouse monoclonal antibody B6 recognizes an extracellular epitope of human TCR Vdelta2, which is expressed on the majority of gamma/delta T cells.

Product Info

Amount :	0.1 mg
Purification :	Purified by protein-A affinity chromatography.
Content :	Concentration: 1 mg/ml Storage Buffer: Phosphate buffered saline (PBS), pH 7.4, 15 mM sodium azide
Storage condition :	Store at 2-8°C. Do not freeze.

Application Note

Flow cytometry: Recommended dilution: 1-4 µg/ml.

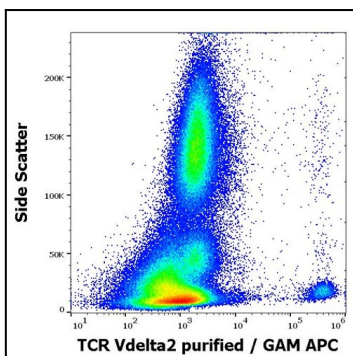


Figure 1: Flow cytometry surface staining pattern of human peripheral whole blood stained using anti-human TCR Vdelta2 (B6) purified antibody

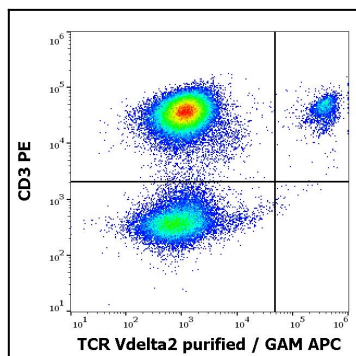


Figure 2: Flow cytometry multicolor surface staining pattern of human lymphocytes using anti-human TCR Vdelta2 (B6) purified antibody and anti-human CD3 (UCHT1) PE antibody

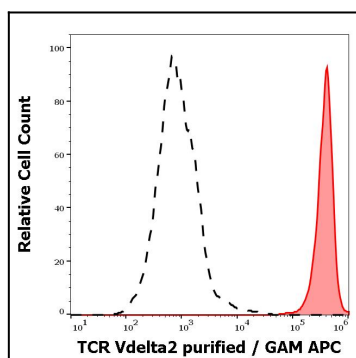


Figure 3: Separation of human TCR Vdelta2 positive lymphocytes (red-filled) from human TCR Vdelta2 negative lymphocytes (black-dashed) in flow cytometry analysis (surface staining) of peripheral whole blood stained using anti-human TCR Vdelta2 (B6) purified antibody